

EPSON Stylus® COLOR 760
EPSON Stylus® COLOR 860

Printer Basics



Printed on recycled paper with at least 10% post-consumer content.

Copyright Notice

All rights reserved. No part of this publication may be reproduced, stored in a retrieval system, or transmitted in any form or by any means, electronic, mechanical, photocopying, recording, or otherwise, without the prior written permission of SEIKO EPSON CORPORATION. The information contained herein is designed only for use with this EPSON printer. EPSON is not responsible for any use of this information as applied to other printers.

Neither SEIKO EPSON CORPORATION nor its affiliates shall be liable to the purchaser of this product or third parties for damages, losses, costs, or expenses incurred by purchaser or third parties as a result of: accident, misuse, or abuse of this product or unauthorized modifications, repairs, or alterations to this product, or (excluding the U.S.) failure to strictly comply with SEIKO EPSON CORPORATION's operating and maintenance instructions.

SEIKO EPSON CORPORATION shall not be liable for any damages or problems arising from the use of any options or any consumable products other than those designated as Original EPSON Products or EPSON Approved Products by SEIKO EPSON CORPORATION.

Trademarks

EPSON and EPSON Stylus are registered trademarks of SEIKO EPSON CORPORATION.

SoundAdvice is a service mark and EPSON FaxAdvice, Micro Piezo, EPSON Software, Film Factory, and PhotoEnhance are trademarks of Epson America, Inc.

General Notice: Other product names used herein are for identification purposes only and may be trademarks of their respective owners. EPSON disclaims any and all rights in those marks.

The ENERGY STAR emblem does not represent EPA endorsement of any product or service.

Contents

WELCOME!	1
About Your Software	2
About Your Documentation	3
Warnings, Cautions, Notes, and Tips	3
Windows System Requirements	4
Macintosh System Requirements	5
ENERGY STAR Compliance	6
Year 2000 Ready	6
Important Safety Instructions	6
Ink Cartridge Safety Instructions	7
VIEWING YOUR ELECTRONIC PRINTER MANUAL	9
Accessing Your Electronic Printer Manual	9
Navigating Your Electronic Printer Manual	10
PRINTING FROM START TO FINISH	13
Using the EPSON Guided Printing Exercise	13
Printing with Windows	14
Loading Paper	14
Opening the Printer Software	15
Selecting Printer Software Settings	16
Controlling Printing	18
Printing on a Macintosh	19
Loading Paper	19
Opening the Printer Software	20
Selecting Printer Software Settings	21
Controlling Printing	22

Printing with PhotoEnhance	23
Using Custom Project Types	26
Using Advanced Settings	28
Using Special Papers	31
EPSON Photo Quality Ink Jet Paper	31
Matte Paper - Heavyweight	31
EPSON Photo Paper	31
Envelopes	34
Selecting the Correct Media Type	35

MAINTAINING YOUR PRINTER **37**

Cleaning the Print Head	37
Using the Head Cleaning Utility	38
Using the Control Panel to Clean the Print Head	39
Examining the Nozzle Check Pattern	40
Replacing an Ink Cartridge	41
Removing and Installing Ink Cartridges	42
Replacing an Outdated Ink Cartridge	44
Aligning the Print Head	46
Cleaning the Printer	47
Transporting the Printer	48

PROBLEM SOLVING	49
Diagnosing Printer Problems	49
Checking the Control Panel Lights	49
Running a Printer Check	51
Identifying Printer Parts	52
Problems and Solutions	53
Problems Setting Up the Printer or Installing Software	53
Problems with Printing	54
Problems Getting Good Print Quality	55
Problems with Paper Feeding	58
Solving Miscellaneous Printout Problems	59
Uninstalling Printer Software	60
Reinstalling Printer Software	60
Where To Get Help	61
EPSON Technical Support	61
Creative Software Technical Support	62
INDEX	63

Welcome!

Your EPSON Stylus® COLOR printer is the ideal output device for small office or business printing. You can print anything from reports and resumes to photos and overhead transparencies with great results.

The printer comes with these features:

- Resolutions up to 1440 by 720 dpi (dots per inch), even on plain paper
- Fast print speeds: EPSON Stylus COLOR 760 prints approximately 7 ppm (pages per minute) for black text and 6 ppm for color; EPSON Stylus COLOR 860 prints approximately 9.5 ppm for black text and 7 ppm for color
- EPSON's exclusive Micro Piezo™ ink jet technology for cleaner dots as small as 4 picoliters
- Specially-designed print engine for whisper-quiet operation
- Four-color printing for photo-quality color and sharp black text on plain paper or a variety of special media
- Great results on any paper size, including letter, legal, envelope, card, and panoramic paper
- Creative software for implementing all your print projects

About Your Software

The printer software CD-ROM includes all the software you need for printing:

- Your printer driver runs your printer and lets you control how your documents look. You can't use your printer without it.
- The EPSON® Guided Printing Exercise, a quick step-by-step guide to changing your printer software settings
- Your creative software, including:
 - Polaroid® PhotoMAX™ Pro, a full-featured image editing program
 - ArcSoft™ PhotoPrinter™ SE, a photo layout program
 - eFax,™ a program that allows you to send and receive faxes directly from your PC (trial version; Windows only)
 - EPSON Software™ Film Factory,™ a photo printing and organizing program (trial version; Windows only)
- Your electronic *Reference Guide* gives you complete information about your printer. (You need an HTML browser—such as Microsoft® Internet Explorer 3.0 or later, or Netscape® Navigator® 3.0 or later—to view the guide.)

If you haven't yet installed your printer software or creative software from your CD-ROM, see the *Start Here* poster for instructions.

About Your Documentation

To set up your printer and install its software, see the *Start Here* poster. This book contains system requirements, important safety information, and instructions on:

- viewing your electronic printer manual
- printing with Windows® or on a Macintosh®
- using special papers
- maintaining the printer
- solving basic problems

For more details about printing with, maintaining, or troubleshooting your printer, see your electronic *Reference Guide*. For instructions on viewing it, see page 9.

(The illustrations in this book show the EPSON Stylus COLOR 860; the EPSON Stylus COLOR 760 has a solid color cover.)

Warnings, Cautions, Notes, and Tips

Please follow these guidelines:



Warnings must be followed carefully to avoid bodily injury.



Cautions must be observed to avoid damage to your equipment.



Notes contain important information about your printer.



Tips contain additional hints for better printing.

Windows System Requirements

To use your printer and its software, your system should have:

- An IBM® compatible PC with at least a 486/66 MHz (for Windows 98) or 486/25 MHz (for Windows 95 or Windows NT® 4.0) processor (Pentium® processor recommended)
- Microsoft Windows 95, Windows 98, or Windows NT 4.0
- At least 16MB of RAM (32MB for Windows 95 or 98, or 64MB for Windows NT 4.0 recommended)
- At least 50MB of free hard disk space (100MB recommended)
- VGA, Super VGA, or better display adapter and monitor
- Double-speed (2x) CD-ROM drive (quad-speed [4x] or faster recommended) for installing the printer software
- For parallel connection: a high-speed, bidirectional, IEEE-1284 compliant parallel cable (6 to 10 feet long); the cable must have a D-SUB, 25-pin, male connector for your computer and a 36-pin, Centronics® compatible connector for the printer

For USB connection: a computer running Windows 98 with a Windows 98 compliant USB port and a shielded USB “AB” cable from Series A (computer) to Series B (printer), up to 6.5 ft. (2 meters) long.



Using an improperly shielded USB cable—especially a cable more than 6.5 ft. (2 meters) long—may cause the printer to malfunction.

Macintosh System Requirements

To use your printer and its software, your system should have:

- An Apple® iMac™ series or Power Macintosh® G3 with USB port
- For iMac: Mac® OS 8.1 or later
For Power Macintosh G3: Mac OS 8.5.1 or later



If your iMac is running OS 8.1, you'll need to update your operating system before installing your printer software. Download and install iMac Update 1.0 or later from Apple at <http://swupdates.info.apple.com>. Contact Apple if you have problems installing the update.

If your iMac is running OS 8.5 or 8.5.1, do not install iMac Update 1.0. Instead, Apple recommends that you download and install iMac Update 1.1.

To find out which operating system your iMac is running, select About This Computer from the Apple menu.

- At least 16MB of available RAM (32MB recommended)
- At least 50MB of free hard disk space (100MB recommended)
- VGA, Super VGA, or better display adapter and monitor
- Double-speed (2x) CD-ROM drive (quad-speed [4x] or faster recommended) for installing the printer software
- A shielded USB “AB” cable from Series A (computer) to Series B (printer), up to 6.5 ft. (2 meters) long.



Using an improperly shielded USB cable—especially a cable more than 6.5 ft. (2 meters) long—may cause the printer to malfunction.

ENERGY STAR Compliance

As an ENERGY STAR Partner, EPSON has determined that this product meets the ENERGY STAR guidelines for energy efficiency. The EPA ENERGY STAR office equipment program is a voluntary partnership with the computer and office equipment industry to promote the introduction of energy-efficient personal computers, monitors, printers, fax machines, and copiers in an effort to reduce air pollution caused by power generation.



Year 2000 Ready



Your EPSON printer is *Year 2000 Ready*. However, be sure the other parts of your computer system are also ready for the year 2000.

Important Safety Instructions

Before using your printer, read the following safety instructions to make sure you use the printer safely and effectively:

- Be sure to follow all warnings and instructions marked on the printer.
- Turn off and unplug the printer before cleaning. Clean with a damp cloth only. Do not spill liquid on the printer.



Always turn the printer off using the  power button. Don't switch off the power strip, or unplug the printer until the  power light is off.

- Do not place the printer on an unstable surface or near a radiator or heating vent or in direct sunlight.
- Do not block or cover the openings in the printer's case or insert objects through the slots.
- Use only the type of power source indicated on the printer's label.

- Connect all equipment to properly grounded power outlets. Avoid using outlets on the same circuit as photocopiers or air control systems that regularly switch on and off.
- Place the printer near a wall outlet where the plug can be easily unplugged.

Placez l'imprimante près d'une prise de contact où la fiche peut être débranchée facilement.

- Do not let the power cord become damaged or frayed.
- If you use an extension cord with the printer, make sure the total ampere rating of the devices plugged into the extension cord does not exceed the cord's ampere rating. Also, make sure the total ampere rating of all devices plugged into the wall outlet does not exceed the wall outlet's ampere rating.
- Except as specifically explained in this manual, do not attempt to service the printer yourself.
- Unplug the printer and refer servicing to qualified service personnel under the following conditions:

If the power cord or plug is damaged; if liquid has entered the printer; if the printer has been dropped or the case damaged; if the printer does not operate normally or exhibits a distinct change in performance. Adjust only those controls that are covered by the operating instructions.

Ink Cartridge Safety Instructions

- Install the ink cartridge immediately after you remove it from its foil package. Leaving the cartridge unpacked for a long time before use may result in reduced print quality.
- Do not put your hand inside the printer or touch the cartridge during printing.
- Under normal circumstances, ink will not come out of the cartridge. If it does get on your skin, wash it off with soap and water. If it gets in your eyes, flush them immediately with water.
- Keep ink cartridges out of the reach of children.
- Do not dismantle the ink cartridges or try to refill them. This could result in damage to the print head.

- Once you install an ink cartridge, do not open the clamp or remove the cartridge except to replace it with a new one. The cartridge may become unusable otherwise.
- Do not use an ink cartridge beyond the date printed on the cartridge package. For best results, use up the ink cartridges within six months of installing them.
- Do not shake an ink cartridge; this can cause leakage.
- Do not move the print head by hand; otherwise you may damage the printer.
- Before transporting the printer, make sure the print head is capped in the far right position and the ink cartridges are in place.

Viewing Your Electronic Printer Manual

Your printer software CD-ROM includes an electronic *Reference Guide* for your printer. The manual is in HTML format, so you need a browser—such as Internet Explorer 3.0 or later or Netscape Navigator 3.0 or later—to view it. If you are using a different browser, the pages may not display correctly.



A browser is not included on the printer software CD-ROM.

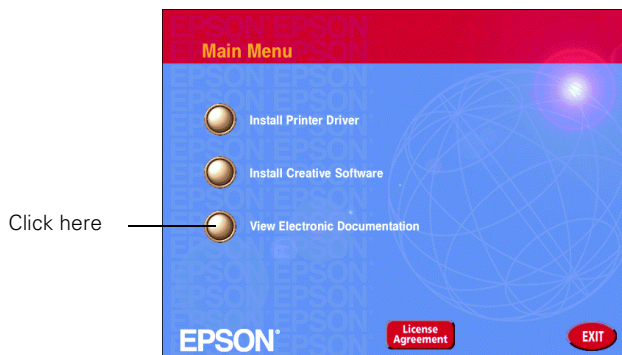
Accessing Your Electronic Printer Manual

You can view your electronic *Reference Guide* from the CD-ROM or copy it to your hard drive and view it from there. Follow these steps:

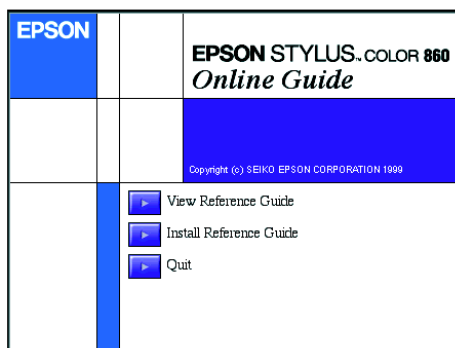
1. Insert your printer software CD-ROM.
2. **Windows:** Double-click  My Computer, double-click your  CD-ROM drive icon, then double-click the  EPSON icon.

Macintosh: Double-click the EPSON CD-ROM icon, then double-click the EPSON icon.

The Main Menu appears:



3. Click View Electronic Documentation.
The main screen for your printer appears:
4. You can either view the manual from the CD-ROM (View Reference Guide) or copy the manual to your hard drive (Install Reference Guide) and view it from there. For details on viewing the manual, see the next section.



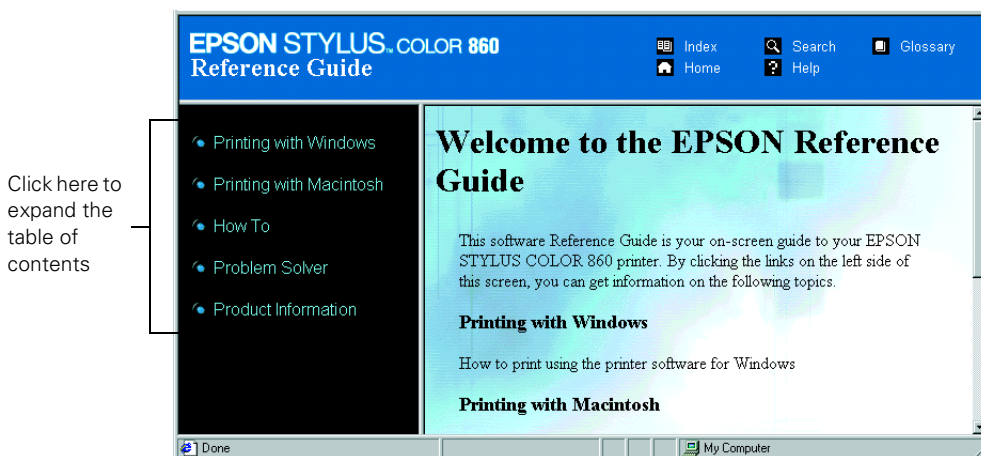
If you copied the manual to your hard drive, you can access it at any time, as follows:

Windows: Select Start, Programs, EPSON, and double-click ESC760 Guide or ESC860 Guide.

Macintosh: Open the EPSON Stylus COLOR 760 or EPSON Stylus COLOR 860 folder and double-click View Reference Guide.

Navigating Your Electronic Printer Manual

When you first open the *Reference Guide*, you see this screen:



Click a topic on the left to expand the table of contents.

After expanding the table of contents, you can click on the topic you want to view.

If there's a right arrow ▶, click it to view subtopics, then click on a topic to go to it.

Click the down arrow ▼ to close a subtopic list.

EPSON STYLUS[™] COLOR 860
Reference Guide

Index Home Search Help Glossary

- Printing with Windows
- Printing with Macintosh
- How To
 - ▶ Paper Handling
 - ▶ Setting Up Your Printer on a Network
 - ▶ Replacing Ink Cartridges
 - ▼ Maintenance
 - Checking the Print Head Nozzles
 - Cleaning the Print Head
 - Aligning the Print Head
 - Cleaning the Printer
 - Transporting the Printer
 - Updating Software

Welcome to the EPSON Reference Guide

This software Reference Guide is your on-screen guide to your EPSON STYLUS COLOR 860 printer. By clicking the links on the left side of this screen, you can get information on the following topics.

Printing with Windows

How to print using the printer software for Windows

Printing with Macintosh

How to print using the printer software for Macintosh

Closed list, click to expand

Click to go to topic

Printing from Start to Finish

Here's what to do to print a basic document—such as a memo, newsletter, or photograph—from loading the paper to selecting print settings to controlling the print job. Follow the instructions in these sections:

- “Printing with Windows” on page 14
- “Printing on a Macintosh” on page 19

You can even practice selecting settings using the EPSON Guided Printing Exercise, as described below.

If you're already familiar with ink jet printing, you can skip ahead to these sections:


- Improving the quality of low-resolution photos and adding special effects with PhotoEnhance™ on page 23
- Selecting a preset project type or a color-matching method, on page 26
- Fine-tuning your settings for maximum control of your printouts, on page 28
- Using special papers such as EPSON Photo Paper or envelopes, on page 31

Using the EPSON Guided Printing Exercise

Your printer software CD-ROM includes a Guided Printing Exercise with step-by-step printing instructions showing you how to access your printer software and make changes to the settings.




To run the exercise, do the following:

Windows: Double-click the  EPSON Guided Printing Exercise icon on your desktop.

Macintosh: Double-click the  EPSON Guided Printing Exercise icon in the EPSON Guided Printing Exercise folder.

Follow the on-screen instructions to use your printer software and print a full-color image.

If you didn't install the Guided Printing Exercise when you set up your printer, follow these steps to install it:

1. Insert the printer software CD-ROM.
2. **Windows:** Double-click  My Computer, double-click your  CD-ROM drive icon, then double-click the  EPSON icon. The Main Menu appears.
Macintosh: Double-click the EPSON CD-ROM drive icon, then double-click the EPSON icon. The Main Menu appears.
3. Click Install Creative Software, then click EPSON Guided Printing Exercise. The exercise is installed on your system.

Printing with Windows

This section describes these basic steps for printing with Windows:

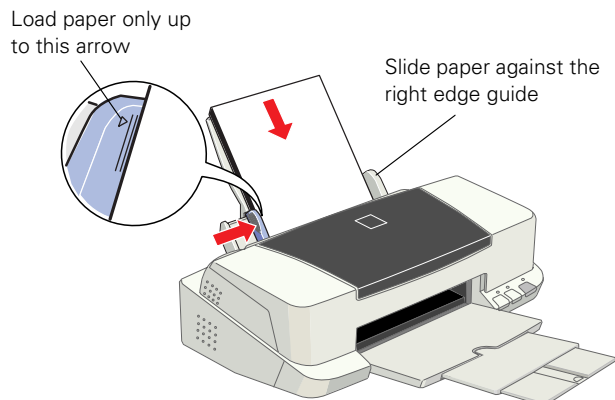
- loading paper
- opening the printer software
- selecting printer software settings
- controlling printing

(To print on a Macintosh, see page 19.)

Loading Paper

Make sure your printer and computer are turned on.

Place your paper against the right edge guide and slide the left edge guide against the paper.



Keep the following in mind when loading paper:

- Load the printable side face up. It's usually whiter or brighter than the other side.
- Load letterhead or preprinted paper into the printer top edge first.
- Don't load paper above the arrow on the left edge guide.

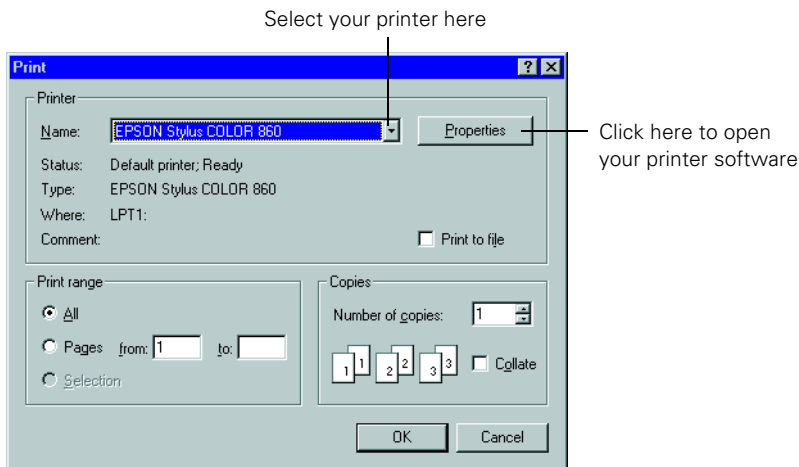


If you're printing on envelopes or other special paper sizes or types, see page 31 for loading instructions.

Opening the Printer Software

After you open your application program and create your document, you're ready to select your printer software settings.

From the File menu, click Print. You see your application's Print dialog box (your dialog box may look slightly different):



Make the following selections on the Print dialog box:

- Make sure your EPSON Stylus COLOR printer model is selected.
- If the Print dialog box contains a Properties button, click it. (If you see a Setup, Printer, or Options button, click it. Then click Properties on the next screen.)

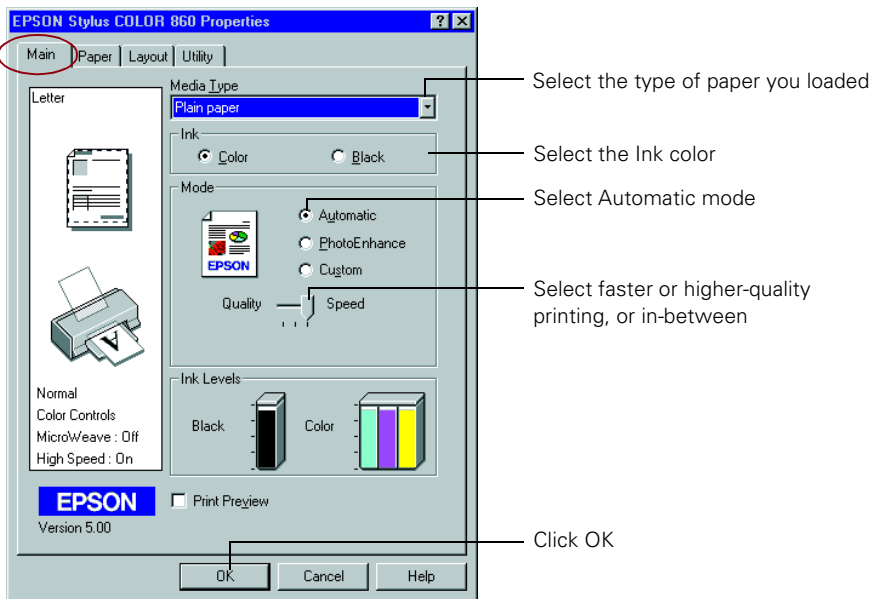


If you click the print icon on your application's tool bar instead of selecting Print from the File menu, you may not get the option to change the printer software settings before printing.

Selecting Printer Software Settings

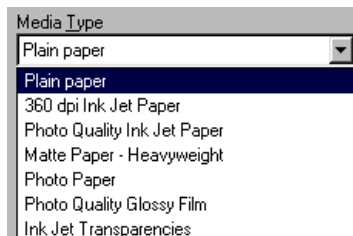
Once you click Properties, you see your printer software Properties dialog box.

The most important thing to remember is to set the correct Media Type for the paper you're using. The Media Type setting affects the other options you can choose. If necessary, click the Main tab to display the settings shown below:



Make the following settings on the Properties dialog box:

- Choose the Media Type you're printing on (click the arrow button to scroll through the list). If you're not sure which setting to select, see page 35.
- Set the Ink option to Color to print a color document. To print a black text document, click Black.



- Set the Mode option to Automatic. This lets the printer software determine the best settings for your print job. It's the easiest way to get good printing results on all types of paper.
- Set the slider in the Mode box to Quality or Speed. This lets you choose between a higher resolution or faster printing (or an in-between setting) for the paper you're using. (The slider is not available when certain media types are selected.)
- When you've selected your settings, click OK to return to your application's Print dialog box.



For more information about printer settings, click the Help button. Or you can right-click any item on the screen and then click What's This?.

Selecting Windows Default Settings

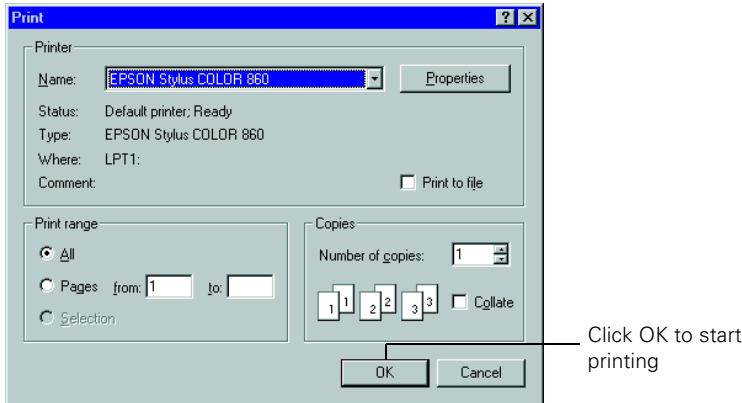
The printer settings you make apply only to the application you're currently using. If you usually print one type of document in different applications—for example, black ink on legal size paper—you can change the default printer settings for all your programs. You do this using the Windows Printer utility:

1. Click Start, point to Settings, and then select Printers.
2. Right-click the EPSON Stylus COLOR 760 or 860 icon.
3. Select Properties (Document Defaults in Windows NT). Then click the Main tab.
4. Select the default settings you want to use for all your applications. Click OK when you're finished.

Remember, you can always change the default settings in your application when you want to print different types of documents. Another way to select a group of settings quickly is to save them as a group; see page 28 for details.

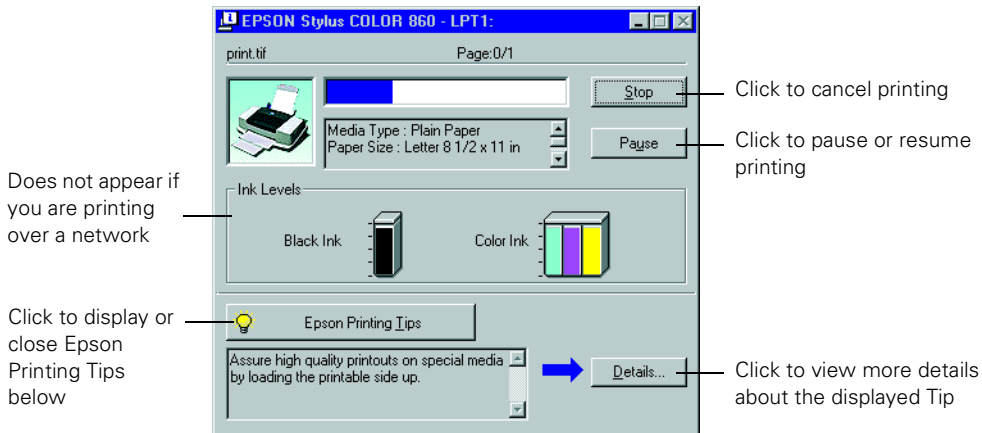
Controlling Printing

Once you've clicked OK, you return to the Print dialog box.



Click OK (or Print, depending on your application) to start printing.

After a moment, the Progress Meter appears and shows the progress of your print job. You can use the buttons to cancel, pause, or restart printing. You can also see how much ink you have left and view printing tips.



For more advanced printer settings, see pages 23 through 30. For more information on printing—for example, previewing your printout, changing the paper size, or adding a watermark—see your electronic *Reference Guide* (described on page 9).

Printing on a Macintosh

This section describes these basic steps for printing on a Macintosh:

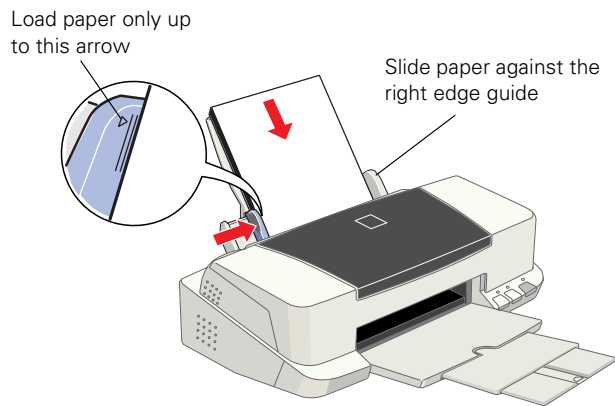
- loading paper
- opening the printer software
- selecting printer software settings
- controlling printing

(To print with Windows, see page 14.)

Loading Paper

Make sure your printer and computer are turned on.

Place your paper against the right edge guide and slide the left edge guide against the paper.



Keep the following in mind when loading paper:

- Load the printable side face up. It's usually whiter or brighter than the other side.
- Load letterhead or preprinted paper into the printer top edge first.
- Don't load paper above the arrow on the left edge guide.

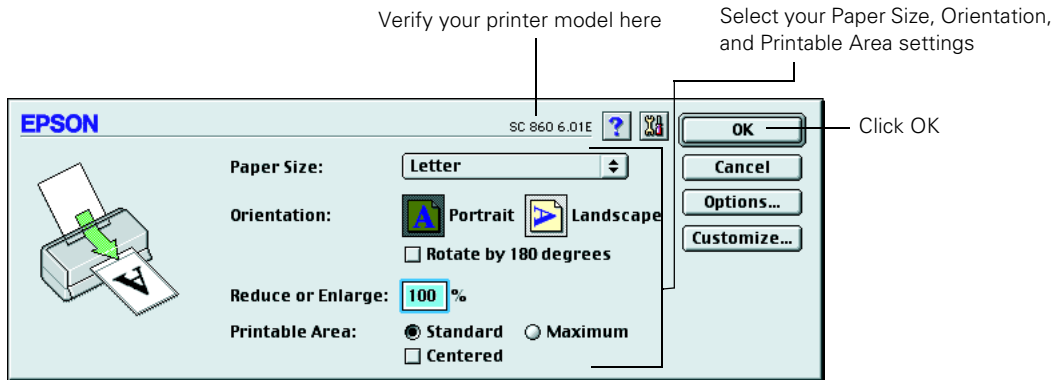


If you're printing on envelopes or other special paper sizes or types, see page 31 for loading instructions.

Opening the Printer Software

After you open your application program and create your document, you're ready to select your page setup and other printer software settings.

From the File menu, click Page Setup. You see your application's page setup dialog box (your dialog box may look slightly different):

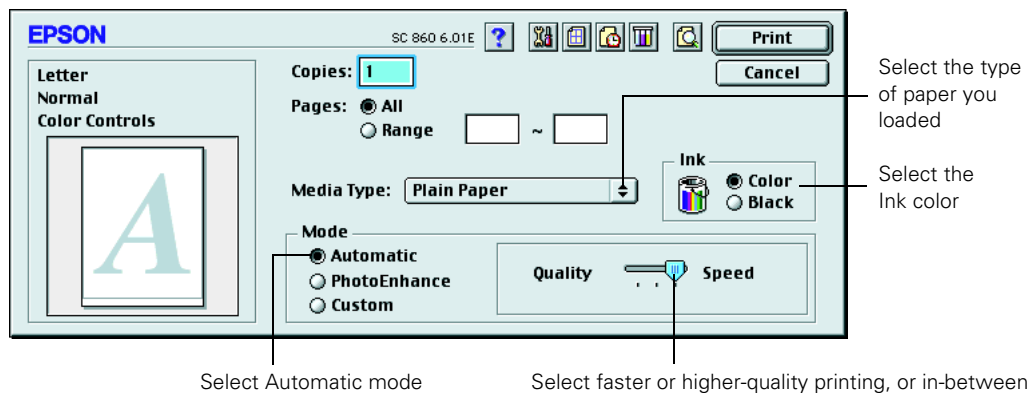


Make the following selections on the page setup dialog box:

- Make sure your EPSON Stylus COLOR printer model (SC 760 or SC 860) is selected. (If the model is incorrect, you need to select your printer in the Chooser; see the *Start Here* poster for instructions.)
- Select the correct Paper Size, Orientation, and Printable Area settings for your document. See your electronic *Reference Guide* for details.
- Click OK to close the page setup dialog box and return to your application window.

Selecting Printer Software Settings

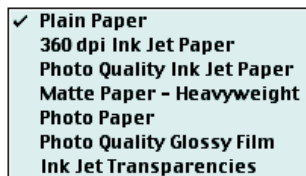
Now open the File menu and click Print. You see the main printer settings dialog box for your application (your dialog box may look slightly different):



The most important thing to remember is to set the correct Media Type for the paper you're using. The Media Type setting affects the other options you can choose.

Make the following settings on the dialog box:

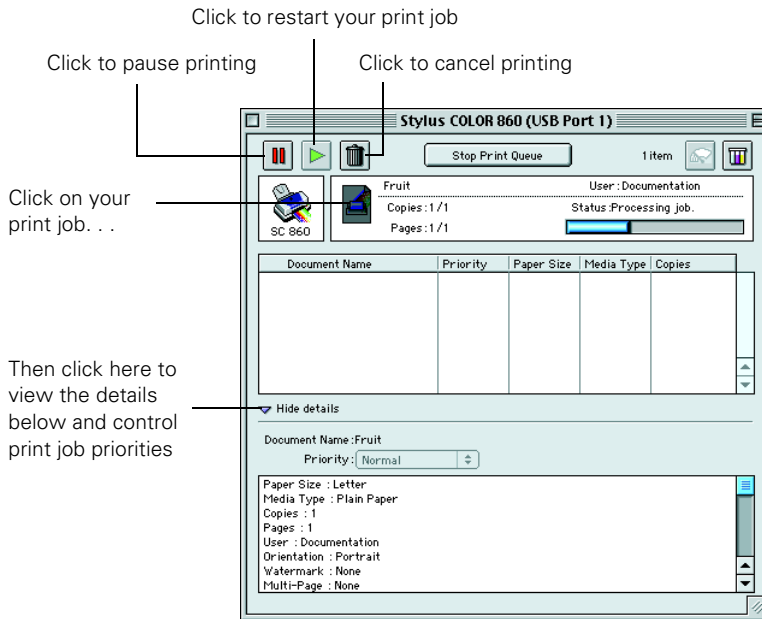
- Choose the Media Type you're printing on (click the arrow button to scroll through the list). If you're not sure which setting to select, see page 35.
- Set the Ink option to Color to print a color document. To print a black text document, click Black.
- Set the Mode option to Automatic. This lets the printer software determine the best settings for your print job. It's the easiest way to get good printing results on all types of paper.
- Set the slider in the Mode box to Quality or Speed. This lets you choose between a higher resolution or faster printing (or an in-between setting) for the paper you're using. (The slider is not available when certain media types are selected.)
- When you've selected your settings, click Print to print your document.



Controlling Printing

Once you've clicked Print, your printer begins printing.

If you turned on background printing, you can select EPSON Monitor3 from the Application menu at the right side of the menu bar to check the progress of your print job. You see the EPSON Monitor3 dialog box:



If you're not using background printing, but you need to cancel the current print job, hold down the **⌘** key and press the **.** (period) key.

For more advanced printer settings, see pages 23 through 30. For more information on printing—for example, previewing your printout, changing the paper size, or adding a watermark—see your electronic *Reference Guide* (described on page 9).

Printing with PhotoEnhance

The printer driver includes PhotoEnhance options that increase image brightness and contrast to improve the appearance of low-resolution photos. You can also add special effects, such as Soft Focus.



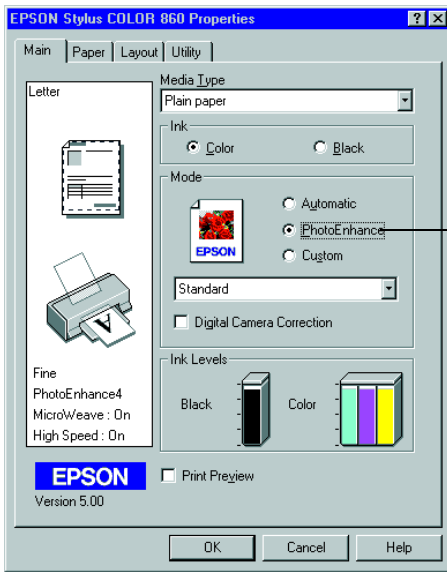
If you're printing high-resolution images, you may want to use the Automatic setting instead; see page 16 (Windows) or page 20 (Macintosh).

PhotoEnhance does not affect your original image; it only affects your printout. Printing with PhotoEnhance may take longer on some systems and images.

Follow these steps:

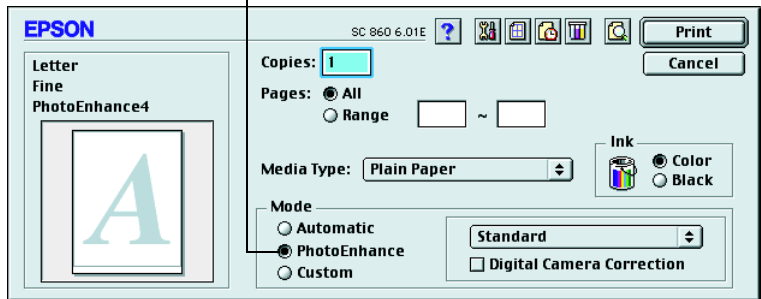
1. Create your image or document in your application software.
2. On a Macintosh, first choose your paper size, orientation, and printable area settings by selecting Page Setup from the File menu. See your electronic *Reference Guide* for details. (You can often make these settings in your application software. If so, you should make the changes there.)
3. Access the printer settings dialog box as described on page 15 (Windows) or page 20 (Macintosh).

You see one of these dialog boxes:



Click PhotoEnhance

Windows

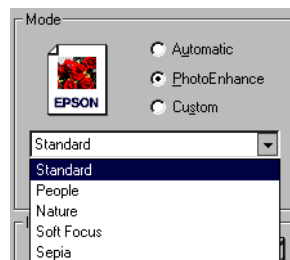


Macintosh

4. Choose the Media Type you want to print on. (If you're not sure which setting to select, see page 35.)
5. Choose Color ink. (You cannot select PhotoEnhance if Black ink is selected.)
6. Click PhotoEnhance.
7. If your photograph was taken with a digital camera, you can click the Digital Camera Correction box. This gives your printed images the appearance of photographs taken with a film camera.

8. For more fine tuning, click Standard. You see a list of specialized settings for photographs.

Select the setting that most closely matches your photograph (People or Nature) or select one of the special filters (Soft Focus or Sepia). You may need to experiment with these settings to get the exact look you want, especially if you have multiple images on a page.




You can also make detailed settings on the Advanced dialog box to fit your individual needs, as described on page 28.

9. **Windows:** If you need to change your paper size, number of copies, orientation, and printable area, click the Paper tab. (You can often make these settings in your application software. If so, you should make the changes there.)

Macintosh: Go to step 10; you already made paper changes in step 2.

10. If you need to reduce or enlarge the image (proportional printing), print multiple pages on a single sheet, “tile” an image to make a large poster, or add a watermark, do the following:

Windows: Click the Layout tab.

Macintosh: Click the  Layout button.

(You can often make these settings in your application software. If so, you should make the changes there.)

11. **Windows:** Click OK to return to your application’s Print dialog box. Then click OK (or Print, depending on your application) to start printing.

Macintosh: Click Print to start printing.

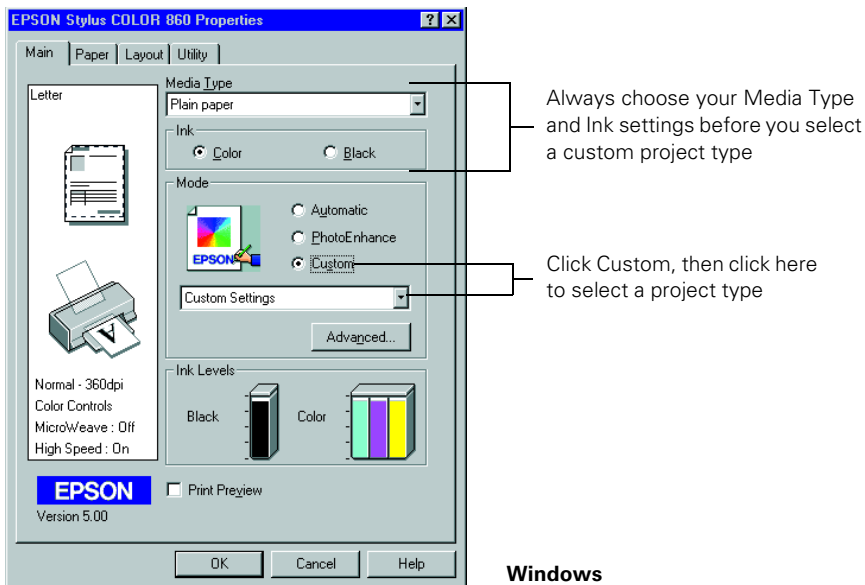
For more details on the printer settings, see your electronic *Reference Guide*, as described on page 9.

Using Custom Project Types

Your EPSON Stylus COLOR printer software includes custom project types with preset options for printing specific types of documents—such as reports, graphs, or drafts. These options let you quickly select the best settings for your particular type of document and paper, or select a color-matching method for your project.

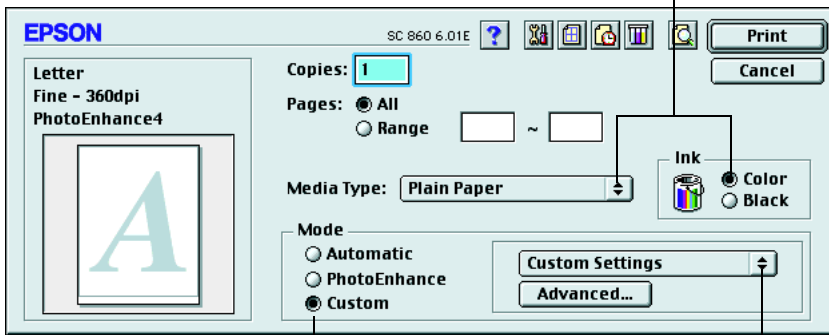
Follow these steps to print with custom project types:

1. Create your image or document in your application software.
2. On a Macintosh, first choose your paper size, orientation, and printable area settings by selecting Page Setup from the File menu. See your electronic *Reference Guide* for details. (You can often make these settings in your application software. If so, you should make the changes there.)
3. Access the printer settings dialog box as described on page 15 (Windows) or page 20 (Macintosh).
4. Choose the Media Type you want to print on. (If you're not sure which setting to choose, see page 35.)
5. Choose Color or Black ink.
6. Click Custom, and then click Custom Settings. You see the list of project types.



Macintosh

Always choose your Media Type and Ink settings before you select a custom project type



Click Custom, then click here to select a project type

7. Choose a project type following these guidelines (these settings are restricted by your Media Type and Ink settings):
 - Text/Graph: For printing graphics-intensive documents like presentations with charts and graphs.
 - Economy: For printing rough drafts of text on plain paper. Saves ink.
 - ICM (Image Color Matching; Windows 95 and Windows 98 only): For printing documents created in an ICM compatible application.
 - sRGB (standard Red Green Blue; recommended only with Windows 98): For printing documents created in an sRGB compatible application using sRGB colors, such as those designed for the World Wide Web. See your Windows 98 online help for details.
 - ColorSync (Macintosh only): For printing documents in conjunction with ColorSync compatible devices and applications.



You can also fine-tune these settings on the Advanced dialog box to fit your individual needs, as described on page 28.

8. **Windows:** If you need to change your paper size, number of copies, orientation, and printable area, click the Paper tab. (You can often make these settings in your application software. If so, you should make the changes there.)

Macintosh: Go to step 9; you already made paper changes in step 2.

9. If you need to reduce or enlarge the image (proportional printing), print multiple pages on a single sheet, “tile” an image to make a large poster, or add a watermark, do the following:

Windows: Click the Layout tab.

Macintosh: Click the  Layout button.

(You can often make these settings in your application software. If so, you should make the changes there.)

10. **Windows:** Click OK to return to your application’s Print dialog box. Then click OK (or Print, depending on your application) to start printing.

Macintosh: Click Print to start printing.

For more details on the printer settings, see your electronic *Reference Guide*, as described on page 9.

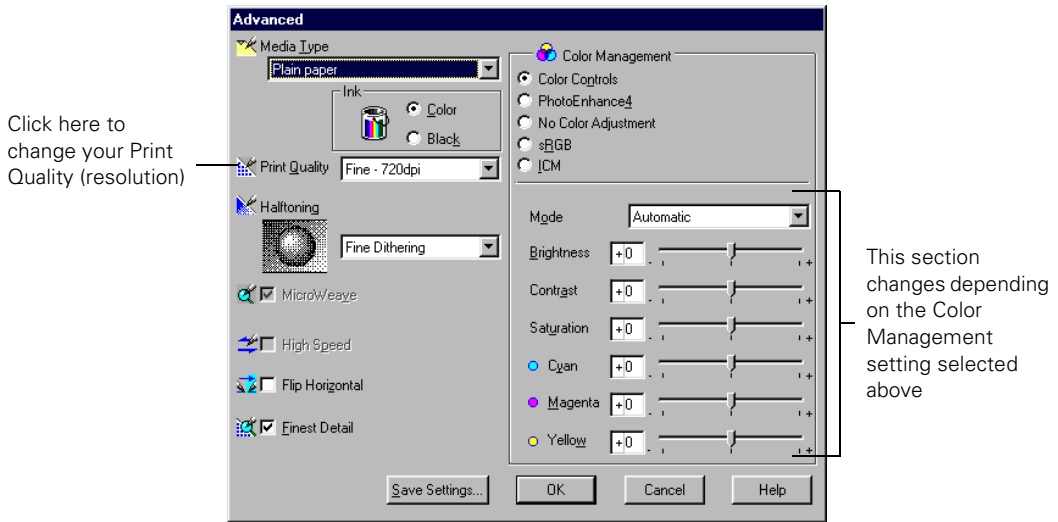
Using Advanced Settings

For maximum control over your project, you can customize your print settings and use special effects. You can even save your custom settings as a group so you can quickly select them whenever you print a similar project.

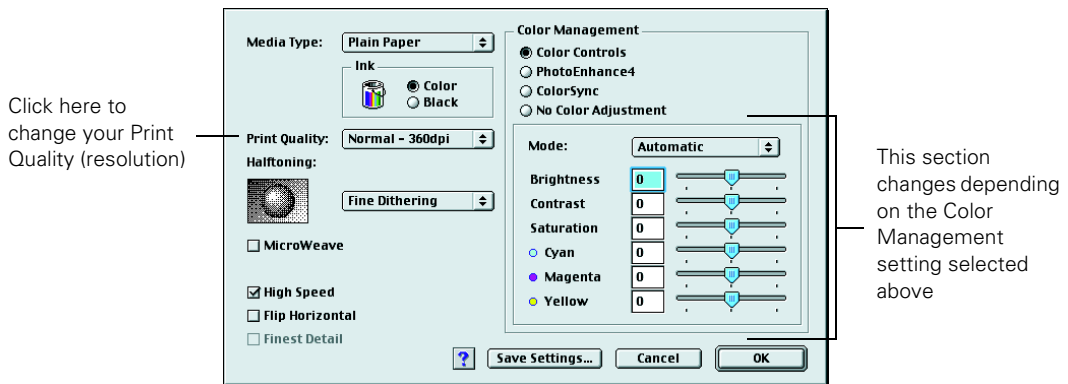
To access advanced settings, follow these steps:

1. Create your image or document in your application software.
2. On a Macintosh, first choose your paper size, orientation, and printable area settings by selecting Page Setup from the File menu. See your electronic *Reference Guide* for details. (You can often make these settings in your application software. If so, you should make the changes there.)
3. Access the printer settings dialog box as described on page 15 (Windows) or page 20 (Macintosh).
4. Select your Media Type and Ink settings.

- Click Custom, and then click the Advanced button. You see the Advanced dialog box:



Windows



Macintosh

- Check the displayed Media Type and Ink settings you selected on the main dialog box. You can change them here as you customize your settings, if needed.
- Choose a Print Quality setting (the availability depends on your Media Type setting).

8. Select a color management method (the availability depends on your operating system).
9. Select any other settings you need to change. Many of the settings are automatically selected by other settings you choose.

For details on all the printer software settings, see your electronic *Reference Guide*.




After you customize your print settings, you can save them as a group. Then you can reuse them whenever you print a similar project. Click Save Settings in the Advanced dialog box. Type a name for your setting group and click OK.

10. Click OK to return to the main printer settings dialog box.
11. **Windows:** If you need to change your paper size, number of copies, orientation, and printable area, click the Paper tab. (You can often make these settings in your application software. If so, you should make the changes there.)

Macintosh: Go to step 12; you already made paper changes in step 2.

12. If you need to reduce or enlarge the image (proportional printing), print multiple pages on a single sheet, “tile” an image to make a large poster, or add a watermark, do the following:

Windows: Click the Layout tab.

Macintosh: Click the  Layout button.

(You can often make these settings in your application software. If so, you should make the changes there.)

13. **Windows:** Click OK to return to your application’s Print dialog box. Then click OK (or Print, depending on your application) to start printing.

Macintosh: Click Print to start printing.

Using Special Papers

How can you get the best-looking photos, most vivid colors, and sharpest text? Always use EPSON's special ink jet papers. To show you how much difference EPSON paper can make, we've included some free samples.

Check out the **EPSON Photo Quality Media Pack** that came with your printer. Instructions for printing on the samples, along with other papers, are given in the following sections.

For a list of EPSON special ink jet papers and ordering information, see the inside back cover.

EPSON Photo Quality Ink Jet Paper

EPSON Photo Quality Ink Jet Paper is great for presentation materials and newsletters. Load it as described on page 14. Before you print, select Photo Quality Ink Jet Paper as the Media Type.

Matte Paper - Heavyweight

Matte Paper - Heavyweight has a professional-looking, flat matte finish for printing photos and graphics on a non-glossy surface. Load up to 20 sheets as described on page 14, including a support sheet beneath the stack. Before printing, select Matte Paper - Heavyweight as the Media Type.

EPSON Photo Paper

You can use EPSON Photo Paper to print photographs that look almost as good as the ones you get from film processing. Photo Paper is available in a variety of sizes.

Keep the following in mind when using EPSON Photo Paper:

- Always load the paper with the whiter (glossier) side facing up.
- Load up to 20 sheets of 4 × 6-inch, letter-size, or A4-size Photo Paper, or 1 sheet of Panoramic paper. Use a support sheet if it is included in the paper package.

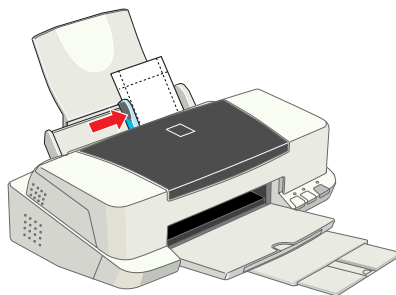
- Select Photo Paper as the Media Type setting.
- To keep your printouts looking their best, store them in a resealable plastic bag or other airtight covering and protect them from heat, humidity, and direct sunlight. Return unused paper to the original package as soon as you finish printing.

If you're using letter-size or A4-size Photo Paper, follow the instructions on page 14 to load and print on the paper. If you're using 4 × 6-inch or Panoramic Photo Paper, see the next sections.

4 × 6-inch Photo Paper

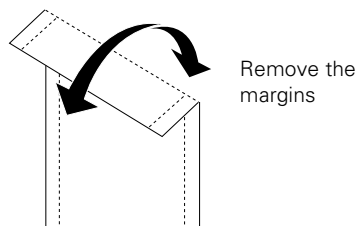
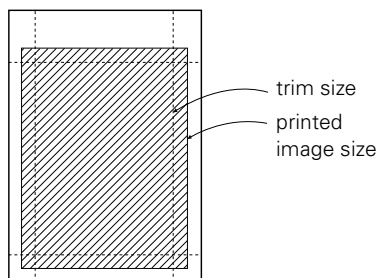
EPSON 4 × 6-inch Photo Paper is micro-perforated around the edges so you can trim your printouts and “bleed” the photo—extend it to the edge of the paper—on all sides.

1. Load the paper against the right edge guide with the glossy side facing up and the perforated margins positioned as shown. Then slide the left edge guide against the paper.




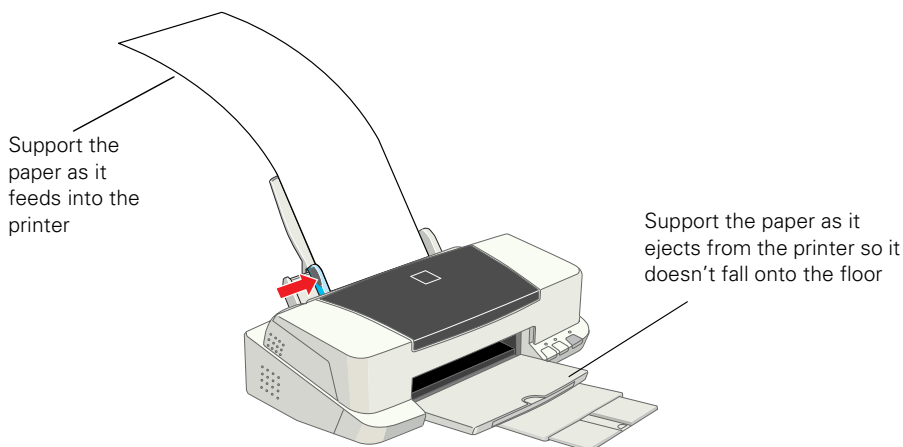
You can load up to 20 sheets at a time, with the included support sheets A and B beneath the stack. (If you don't have the support sheets, use plain paper cut to size.)

2. When you create the image in your application software, size it to 4.25 × 6.25 inches. Or use your printer software's Reduce/Enlarge (Windows) or Fit to Page (Macintosh) settings, as described in your electronic *Reference Guide*.
3. Choose Photo Paper as the Media Type setting.
4. Choose Photo Paper 4 × 6 in as the Paper Size setting and Maximum as the Printable Area setting.
5. After you print your picture, fold the paper back and forth along the perforations and carefully tear off the margins.



Panoramic Photo Paper

1. Pull up the paper support extension. Load one sheet of Panoramic paper glossy side up. Hold up the paper's top edge and press the  load/eject button to feed it into the printer.



2. Choose Photo Paper as the Media Type setting and Panoramic 210 × 594 mm as the Paper size setting.

Preserving Photos on EPSON Photo Paper

EPSON Photo Paper has been specially formulated to work with EPSON's ink to create prints that last as long as traditional photographs when protected from light in photo albums or similar archival conditions.

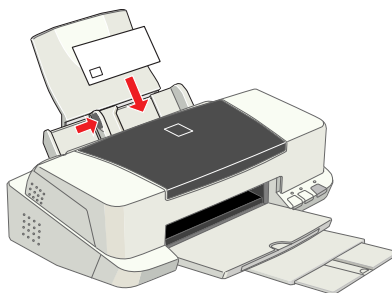
When you display your EPSON Photo Paper prints in picture frames or mounted on the wall, the paper provides extra UV (ultraviolet) light protection so your prints will last longer than prints on other ink jet photo papers. Depending on the type and intensity of the light your print is exposed to, a print on EPSON Photo Paper may last two or more years before noticeable fading occurs. Fade resistance could decrease in intense light conditions or increase if your print is protected by glass or special laminates.

For optimum results and longer print life, print your digital photos on EPSON Photo Paper. See the inside back cover of this manual for a list of available paper sizes.

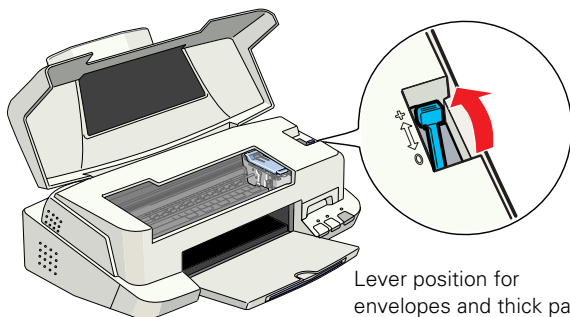
Envelopes

You can load up to 10 envelopes at a time, flap edge first and printable side up. Place them against the right edge guide and slide the left edge guide against them.

(You'll get better results if you press each envelope flat before loading it, or load one envelope at a time.)



Set the thickness lever to the **+** position when you print on envelopes or other thick media. (Return the lever to the **0** position before you print on regular paper.)



Lever position for envelopes and thick paper

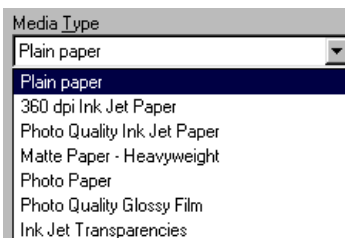
Select Plain paper as the Media Type setting and choose the correct envelope size as the Paper Size setting.

If the printing smears or you have banding (light lines), try turning off High Speed printing in the Advanced dialog box. (See page 28 for instructions on accessing the dialog box.)

Selecting the Correct Media Type

Your printer automatically adjusts itself for the type of paper you select in your printer software. That's why the Media Type setting is so important. It tells your printer what kind of paper you're using and adjusts the ink coverage accordingly.

Before you print, always check your Media Type setting. Here are the settings you should choose for your paper:



For this paper . . .	Select this Media Type setting . . .
Plain paper sheets or envelopes	Plain paper
EPSON 360 dpi Ink Jet Paper EPSON Iron-On Cool Peel Transfer Paper	360 dpi Ink Jet Paper
EPSON High Quality Ink Jet Paper EPSON Photo Quality Ink Jet Paper EPSON Photo Quality Ink Jet Cards EPSON Photo Quality Self Adhesive Sheets	Photo Quality Ink Jet Paper
EPSON Photo Paper EPSON Photo Quality Glossy Paper	Photo Paper
EPSON Photo Quality Glossy Film EPSON Photo Stickers	Photo Quality Glossy Film
EPSON Ink Jet Transparencies	Ink Jet Transparencies
Matte Paper - Heavyweight	Matte Paper - Heavyweight



If any paper you buy comes with a cleaning sheet, don't use the cleaning sheet with this printer; it may jam inside the printer.

Maintaining Your Printer

This section describes maintenance procedures to keep your printer working at its best and preparation steps for moving your printer. Follow the instructions here for:

- cleaning the print head (below)
- replacing an ink cartridge (on page 41)
- aligning the print head (on page 46)
- cleaning the printer (on page 47)
- transporting the printer (on page 48)

For more details, see your electronic *Reference Guide*, as described on page 9.

Cleaning the Print Head

If your printed image is unexpectedly light or faint, or dots are missing from the image, you may need to clean the print head. This unclogs the nozzles so they can deliver ink properly.

Cleaning the print head uses ink, so clean it only if print quality declines. You can clean the print head in either of the following ways:

- using the Head Cleaning utility (when the printer is connected to a local port, not over a network), as described on page 38
- using the printer's control panel buttons, as described on page 39





When you don't turn on your printer for a long time, the print quality can decline. It's a good idea to turn on your printer at least once a month to maintain good print quality.

If any paper you buy comes with a cleaning sheet, don't use the cleaning sheet with your printer; it may jam inside the printer.

Using the Head Cleaning Utility


Follow these steps to run the Head Cleaning utility:

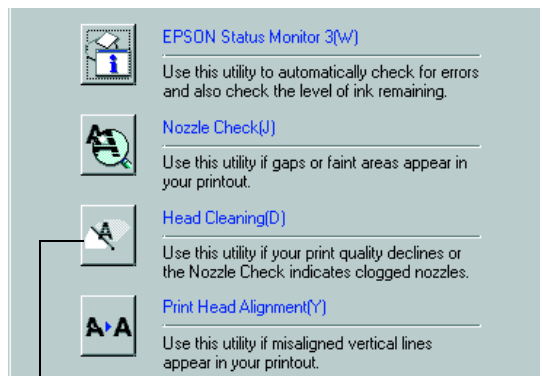
1. Make sure the printer is turned on but not printing, and both the  black and  color ink out lights are off. (If an ink out light is flashing, replace the ink cartridge instead.)
2. If you have an application running, access the printer settings dialog box as described on page 15 (Windows) or page 20 (Macintosh).

Or, with Windows, click Start, point to Settings, then select Printers. Right-click your EPSON Stylus COLOR printer icon in the Printers window. Then select Properties (Document Defaults in Windows NT).

3. **Windows:** Click the Utility tab.

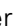
Macintosh: Click the  Utility button.


4. On the Utility menu, click the Head Cleaning button.
5. Follow the instructions on the screen to clean the print head. Cleaning takes about 30 seconds, during which the printer makes some noise and the  power light flashes.



Head Cleaning
button



Never turn off the printer while the  power light is flashing, unless the printer hasn't moved or made noise for more than 5 minutes.

6. When the  power light stops flashing, run a nozzle check to confirm the print head nozzles are clean and reset the cleaning cycle.





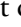
Make sure paper is loaded in the printer and click Print nozzle check pattern. Then click Next. The nozzle check pattern prints (see page 40 for details).

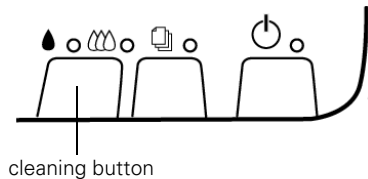
7. If the nozzle check pattern has no gaps in its dots, click Finish.


If the pattern is missing dots, click Clean to clean the print head again. If you don't see any improvement after cleaning three or four times, check the solutions in "Problems Getting Good Print Quality" on page 55. You can also turn the printer off and wait overnight—this allows any dried ink to soften—and then try cleaning the print head again.


Using the Control Panel to Clean the Print Head

Follow the steps below to clean the print head. (See page 49 for more control panel information.)

1. Make sure the printer is turned on but not printing, and both the  black and  color ink out lights are off. (If an ink out light is flashing, replace the ink cartridge before continuing.)
2. Press the   cleaning button and hold it down for three seconds. Cleaning takes about 30 seconds, during which the printer makes some noise and the  power light flashes.



Never turn off the printer while the  power light is flashing, unless the printer hasn't moved or made noise for more than 5 minutes.

3. After the  power light stops flashing, print a page to test the print quality and reset the cleaning cycle.


If your printer is connected directly to the computer, go to step 4 to run a nozzle check.

If you're printing over a network, open an application and print a short document containing black and color data. Then go to step 8.

4. If you have an application running, access the printer settings dialog box as described on page 15 (Windows) or page 20 (Macintosh).

Or, with Windows, click Start, point to Settings, then select Printers. Right-click your EPSON Stylus COLOR printer icon in the Printers window. Then select Properties (Document Defaults in Windows NT).

5. **Windows:** Click the Utility tab.

Macintosh: Click the  Utility button.

6. Make sure paper is loaded in the printer, click the Nozzle Check button, and click Next. The nozzle check pattern prints (see the next section for details).

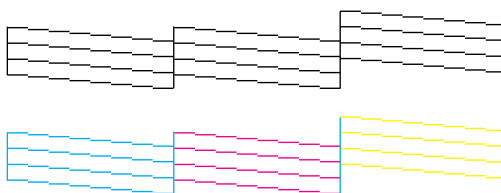
7. If the nozzle check pattern has no gaps in its dots, click Finish.

If the pattern is missing dots, click Clean to clean the print head again.

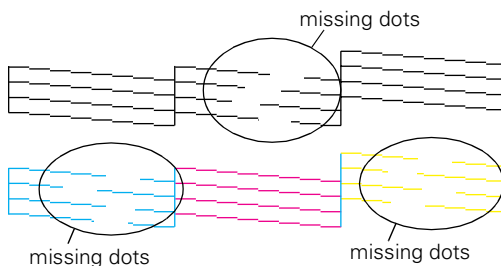
8. If you don't see any improvement after cleaning three or four times, check the solutions beginning on page 55. You can also turn the printer off and wait overnight—this allows any dried ink to soften—and then try cleaning the print head again.

Examining the Nozzle Check Pattern



Examine the nozzle check pattern you print. It should look something like this:



Each staggered horizontal and straight vertical line should be complete, with no gaps in the dot pattern. If your printout looks okay, you're done. If any dots are missing, as shown below, clean the print head again; see page 37 for instructions.



Replacing an Ink Cartridge

When the  black or  color ink out light flashes, the indicated cartridge is low on ink. This is a good time to make sure you have a new cartridge. When the light stays on, the cartridge is empty and you need to replace it.



You cannot print if either ink cartridge is empty. Leave the empty cartridge installed in the printer until you have obtained a replacement. Otherwise the ink remaining in the print head nozzles may dry out.

Use these EPSON ink cartridges within six months of installing them and before the expiration date on the package:

- Black ink cartridge: S020189
- Color ink cartridge: S020191


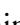


To ensure good results, use genuine EPSON ink cartridges and do not refill them. Other products may cause damage to your printer not covered by EPSON's warranty.

When you need new ink cartridges, contact your dealer or call EPSON Accessories at (800) 873-7766 or visit our web site at www.epsonsupplies.com (U.S. sales only). In Canada, please call (800) 873-7766 for dealer referral.



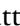
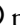
If you need to replace an ink cartridge before the lights flash (because the ink is too old, for example) follow the instructions in “Replacing an Outdated Ink Cartridge” on page 44.

Removing and Installing Ink Cartridges

You can replace a cartridge when the  black or  color ink out light is either flashing or on. (If you perform these steps when both ink out lights are off, the printer cleans the print heads as described on page 37.)

Be sure you have a new ink cartridge before you begin. Once you start the ink cartridge replacement procedure, you must complete all the steps in one session.

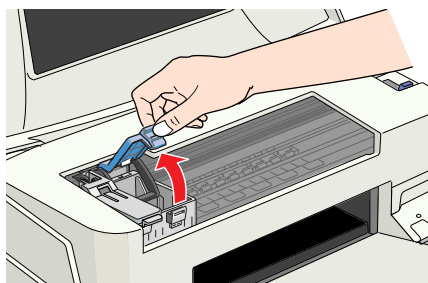
Follow these steps to replace ink cartridges:

1. Make sure the printer is turned on and not printing (the  power light should be on, but not flashing), then open the printer cover.
2. Press the   cleaning button and hold it for about three seconds until the print head moves left and the  power light begins flashing.



To avoid damaging the printer, never move the print head by hand. Don't open the clamp or remove a cartridge except to replace it with a new one. Once you remove a cartridge, you can't reuse it, even if it contains ink.

3. Pull up the ink cartridge clamp. The cartridge rises up from its holder. (The illustration shows color ink cartridge replacement. To replace the black ink cartridge, lift up only the smaller clamp on the left.)

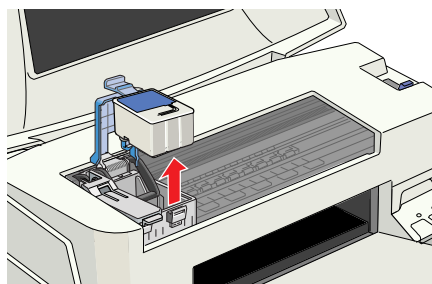


4. Lift the cartridge out of the printer and dispose of it carefully.



Keep ink cartridges out of the reach of children.

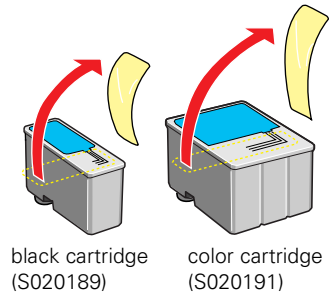
If ink gets on your hands, wash them thoroughly with soap and water. If ink gets into your eyes, flush them immediately with water.



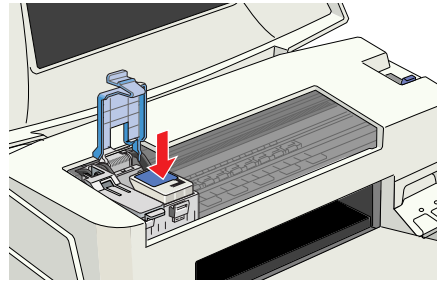
- Unwrap the new ink cartridge. Then remove *only* the yellow part of the tape seal on top. Don't remove the blue part of the tape seal.




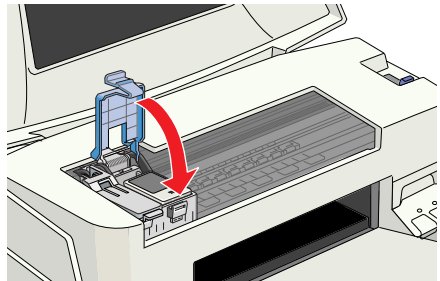
You must remove the yellow tape from the top of the cartridge or you will permanently damage it. Don't pull off the blue portion or try to remove the clear seal underneath the cartridge.





- Lower the new ink cartridge into its holder with the label facing up and toward the back of the printer.




- Press down the ink cartridge clamp until it locks in place, but don't press down on the cartridge itself.
- If you need to replace the other ink cartridge, repeat steps 3 through 7 before continuing with step 9.
- Press the  cleaning button and close the printer cover. The printer moves the print head and begins charging the ink delivery system.





The  power light flashes, and the printer makes noise. Charging takes about 30 seconds. When it's finished, the  power light stops flashing and stays on.

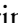




Never turn off the printer while the  power light is flashing, unless the printer hasn't moved or made noise for more than 5 minutes.

Replacing an Outdated Ink Cartridge

When an ink cartridge is more than six months old, you may need to replace it if you notice that your printouts don't look as good as they used to. If print quality doesn't improve after cleaning and aligning the print head, you can replace one or both cartridges.

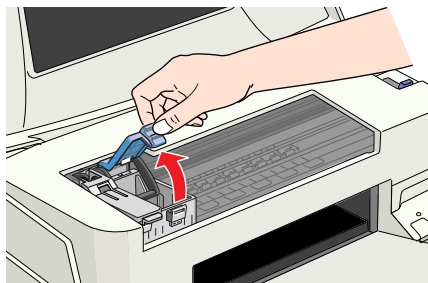
Follow these steps to replace an ink cartridge *before* the  black or  color ink out light is flashing or on:

1. Make sure the printer is turned on and not printing (the  power light should be on, but not flashing), then open the printer cover.
2. Press the  load/eject button and hold it for about three seconds until the print head moves left and the  power light begins flashing.



To avoid damaging the printer, never move the print head by hand. Don't open the clamp or remove a cartridge except to replace it with a new one. Once you remove a cartridge, you can't reuse it, even if it contains ink.

3. Pull up the ink cartridge clamp. The cartridge rises up from its holder. (The illustration shows color ink cartridge replacement. To replace the black ink cartridge, lift up only the smaller clamp on the left.)

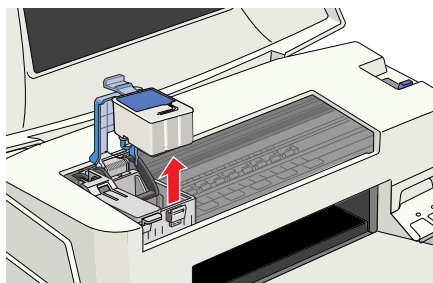


4. Lift the cartridge out of the printer and dispose of it carefully.



Keep ink cartridges out of the reach of children.

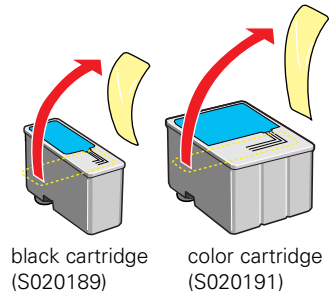
If ink gets on your hands, wash them thoroughly with soap and water. If ink gets into your eyes, flush them immediately with water.



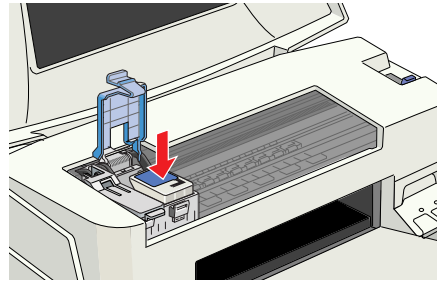
- Unwrap the new ink cartridge. Then remove *only* the yellow part of the tape seal on top. Don't remove the blue part of the tape seal.




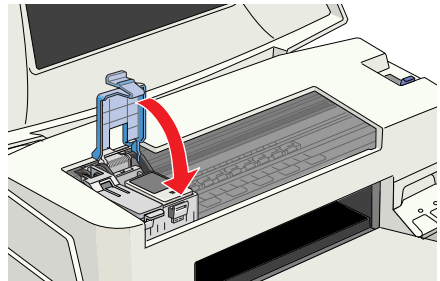
You must remove the yellow tape from the top of the cartridge or you will permanently damage it. Don't pull off the blue portion or try to remove the clear seal underneath the cartridge.





- Lower the new ink cartridge into its holder with the label facing up and toward the back of the printer.




- Press down the ink cartridge clamp until it locks in place, but don't press down on the cartridge itself.
- If you need to replace the other ink cartridge, repeat steps 3 through 7 before continuing with step 9.
- Press the  load/eject button again and close the printer cover. The printer moves the print head and begins charging the ink delivery system.



The  power light flashes and the printer makes noise. Charging takes about 30 seconds. When it's finished, the  power light stops flashing and stays on.



Never turn off the printer while the  power light is flashing, unless the printer hasn't moved or made noise for more than 5 minutes.

Aligning the Print Head

If your printouts contain misaligned vertical lines, you may need to align the print head. Your printer must be connected to a local port, not on a network, to use the Print Head Alignment utility.

Follow these steps:

1. Make sure the printer is turned on, but not printing, and letter-size paper is loaded.



Load paper that's at least 8.27 inches (210 mm) wide to prevent ink from spraying inside the printer and smudging your printouts.

For the best results, load EPSON ink jet paper in the printer whenever you check the print head alignment.

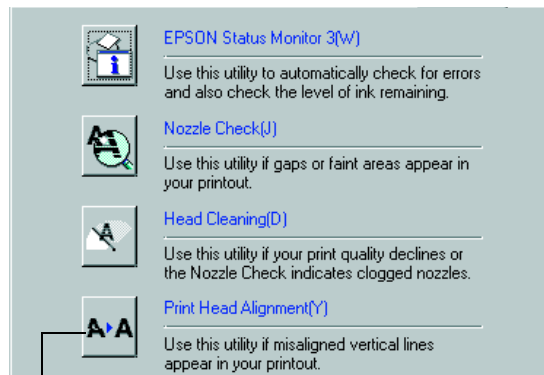
2. If you have an application running, access the printer settings dialog box as described on page 15 (Windows) or page 20 (Macintosh).

Or, with Windows, click Start, point to Settings, then select Printers. Right-click the EPSON Stylus COLOR icon in the Printers window. Select Properties (Document Defaults in Windows NT).

3. **Windows:** Click the Utility tab.

Macintosh: Click the  Utility button.

4. You see the Utility menu. Click the Print Head Alignment button.
5. Follow the instructions on the screen to print a test page.
6. Select the most precise alignment pattern from the choices on the test page. Enter the number of the best aligned pattern following the instructions on the screen.



Print Head Alignment button

Cleaning the Printer

To keep your printer working at its best, you should clean it several times a year. Follow these steps:

1. Turn off the printer, unplug the power cord, and disconnect the printer cable.
2. Remove all the paper from the sheet feeder.
3. Clean the exterior of the printer with a soft, damp cloth.
4. Clean ink out of the printer's interior with a soft, damp cloth.



Don't touch the gears inside the printer.

Never use alcohol or thinner for cleaning; they can damage the printer components and case.

Don't use a hard or abrasive brush.

Don't get water on the printer components and don't spray lubricants or oils inside the printer.

Don't use any cleaning sheets included with special media; they may jam inside the printer.

Transporting the Printer

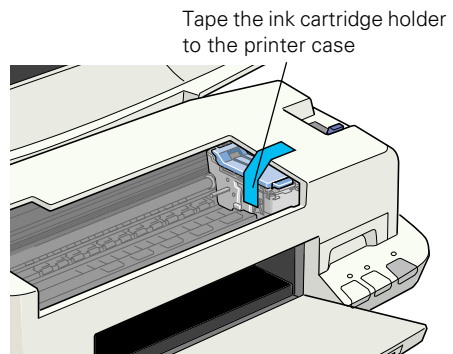
If you move your printer some distance, you need to prepare it for transportation in its original box. Follow these steps:



To avoid damage, always leave the ink cartridges installed when transporting the printer.

Be sure to remove the tape used in step 4 after installing the printer in its new location.

1. Turn on the printer, wait until the print head locks in the far right position, then turn off the printer.
2. Unplug the power cord from the electrical outlet. Then disconnect the printer cable from the printer.
3. Remove any paper from the printer and remove the paper support.
4. Open the printer cover. Secure the ink cartridge holder to the printer with tape as shown, then close the printer cover.
5. Push in the output tray extensions and close the tray.
6. Repack the printer and attachments in the original box using the protective materials that came with it. See the unpacking sheet that was packed with your printer.



Be sure to keep the printer level as you transport it.

After transporting the printer, remove the tape securing the print head and test your printer. If you notice a decline in print quality, clean the print head (see page 37); if output is misaligned, align the print head (see page 46).

Problem Solving

This section gives you the basics for diagnosing and solving printer problems.

- First see “Diagnosing Printer Problems” to help determine what the cause of the problem may be.
- Then see “Problems and Solutions” on page 53 for solutions to common setup and software problems.

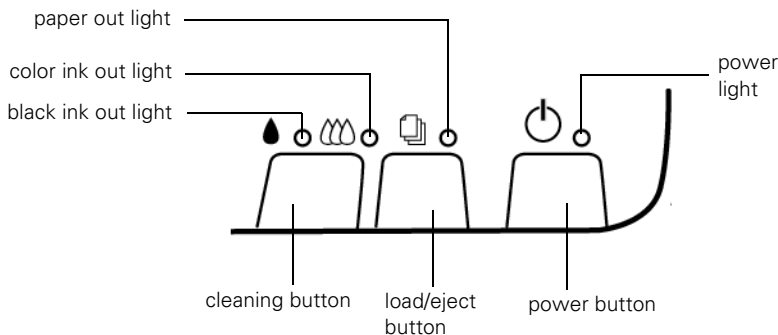


It’s a good idea to check EPSON’s web site periodically for possible updates to your printer driver. Visit www.epson.com and check the section for your product to see if there is a new driver available for downloading to your computer.

Diagnosing Printer Problems

You can diagnose some problems by checking the printer’s control panel lights, as described below, or running a printer check, as described on page 51.

Checking the Control Panel Lights







Follow the guidelines on the next page when you check the control panel lights.

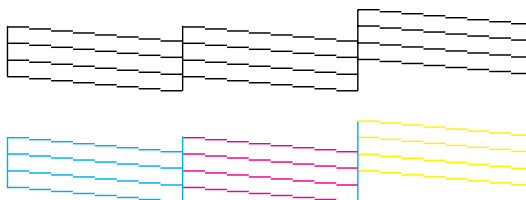
<p>⏻ is on</p>	<p>The ⏻ power light is on when the printer is on and ready to print. It flashes when the printer is receiving a print job, charging ink, or cleaning the print head.</p>
<p>📄 flashes and 💧 and 🖨️ are on</p>	<p>When the 📄 paper out light flashes and both ink out lights come on, you have a paper jam. Press the 📄 load/eject button to try to clear the jam. If that doesn't work, turn off the printer and gently pull out all the paper. Make sure none of the sheets are curled, creased, old, stuck together, or too thin. Then reload the paper against the right edge guide and slide the left edge guide against it. Turn on the printer and press the 📄 load/eject button to resume printing.</p>
<p>📄 is on</p>	<p>When the 📄 paper out light comes on, your paper is out or incorrectly loaded. Make sure none of the sheets are curled, creased, old, stuck together, or too thin. Then reload the paper against the right edge guide and slide the left edge guide against it. Press the 📄 load/eject button to resume printing.</p>
<p>💧 or 🖨️ flash</p>	<p>When an ink out light flashes, your ink supply is low. Make sure you have a replacement cartridge (black S020189, color S020191).</p>
<p>💧 or 🖨️ are on</p>	<p>When an ink out light comes on, you need to replace the ink cartridge. Make sure you have a replacement cartridge (black S020189, color S020191). See page 41 for replacement instructions.</p>
<p>⏻ and 📄 flash and 💧 and 🖨️ are on</p>	<p>When the ⏻ power and 📄 paper out lights flash, and one or both of the ink out lights come on, jammed paper may be blocking movement of the print head or you may not have removed the yellow tape seal from the installed ink cartridge(s). Turn off the printer, open the cover, and check inside for any jammed paper. Then turn the printer back on. If an ink out light remains on and the print head moves into replacement position, replace the ink cartridge(s) as described on page 44. If the lights still flash and/or come on, contact your dealer or EPSON; see page 61 for contact information.</p>
<p>⏻ 📄 💧 🖨️ flash</p>	<p>When all the lights flash, your printer may have an internal error. Make sure you removed all the packing material as described on the unpacking sheet in your printer box. Then turn off the printer, wait a few seconds, and turn it on again. If the lights still flash, contact your dealer or EPSON; see page 61 for contact information.</p>
<p>⏻ 📄 💧 🖨️ are off</p>	<p>When all the lights are off, the printer is not receiving power. Try these solutions:</p> <ul style="list-style-type: none"> ■ Make sure the printer is turned on. ■ Turn off the printer, plug in the power cord securely, and turn on the printer again. ■ Make sure the outlet is operable and is not controlled by a switch or timer. If in doubt, try using another outlet.

Running a Printer Check

You can run a printer check to determine whether a problem comes from the printer itself or some other source. Follow these steps to run the printer check:

1. Make sure both the printer and computer are turned off.
2. Disconnect the interface cable from the printer.
3. Make sure paper is loaded in the printer.
4. Hold down the  load/eject button, then press and release the  power button. Continue holding down the  load/eject button until the  power light starts to flash, then release it.

The printer prints one page showing its ROM version number, ink counter, and a nozzle check pattern. Only the nozzle check pattern is shown below. (If the pattern has gaps in its dots, you need to clean the print head; see page 37.)



5. To end the check, turn off the printer after it prints the check page. Then reconnect the interface cable and turn on your printer and computer.

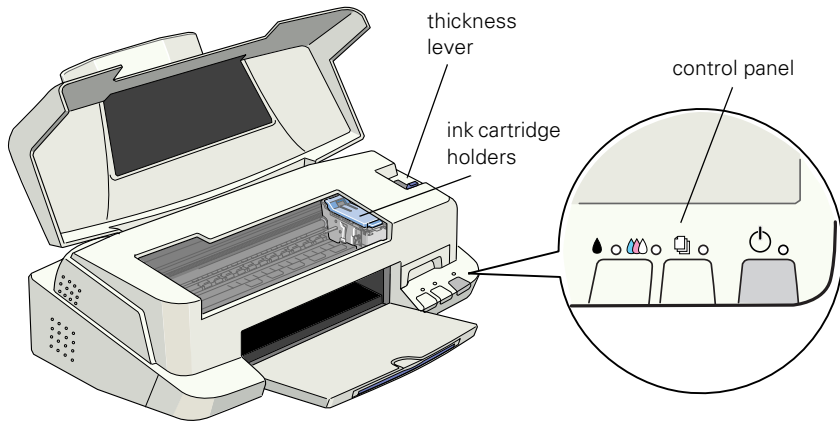
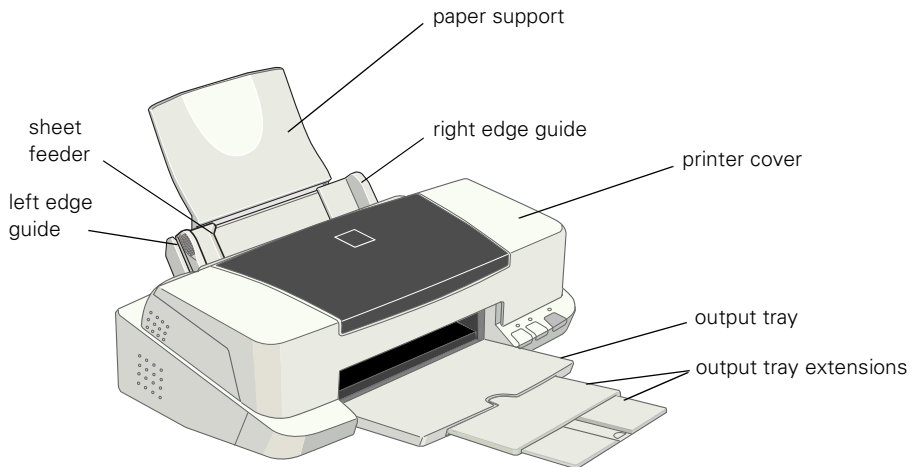
If the check page prints, the problem probably lies in your software settings, the interface cable, or your computer.

If the check page doesn't print, you may have a problem with your printer.

Try the suggestions in “Problems and Solutions” beginning on page 53. If nothing seems to work, contact your dealer or EPSON as described on page 61.

Identifying Printer Parts

If you need help identifying the parts of the printer, refer to these illustrations:



Problems and Solutions

Here are some basic troubleshooting tips if you have any problems setting up your printer, installing software, getting good print quality, feeding paper, or other miscellaneous problems.

Problems Setting Up the Printer or Installing Software

The printer started making noise after ink cartridge installation . . .

- The first time you install ink cartridges, the printer must charge its ink delivery system for a couple minutes. Wait until charging finishes (the Ⓞ power light stops flashing) before you turn off the printer. If you turn off the printer while it's charging, it begins charging again the next time you turn it on and uses more ink than necessary.
- Make sure the ink cartridge clamps are locked down completely and that no packing material remains in the printer. Turn off the printer, disconnect it from your computer, and turn it on again to clear the error. Then turn it off, reconnect it, and turn it on again.

- If the printer stops moving or making noise, but the Ⓞ power light is still flashing after 5 minutes, turn off the printer. If the light is still flashing when you turn it back on, contact your EPSON dealer or see “Where To Get Help” on page 61.

You're having problems installing the printer software . . .

- Carefully follow the instructions on the *Start Here* poster.
- Make sure your printer is turned on and the printer cable is securely connected to the printer and computer.
- Make sure you've closed all other applications, including any screen savers. Then try installing the software again.

You're printing over a network . . .

See your electronic *Reference Guide* for instructions on configuring your printer for use on a network.

Problems with Printing

Only the ⏻ power light is on, but nothing prints . . .

- Make sure the interface cable is connected securely and that the cable meets the system requirements on page 4 or page 5.
- Run a printer check as described on page 51. If the check page prints, make sure your printer and application software are installed correctly.
- If you're printing on a network, you need to set up your printer for network printing, as described in your electronic *Reference Guide*.

The printer sounds as though it is printing, but nothing prints . . .

Make sure the print head nozzles are not clogged. To clean the print head, see page 37.

Printing is too slow . . .

Make sure your system meets the requirements listed on page 4 or page 5. If you're printing a high-resolution image, you need more than the minimum requirements listed.

You may also need to:

- Clear space on your hard disk or run a defragmentation utility.
- Close open applications that you're not using.
- Increase your system's memory (RAM).

For the fastest printing, try the following:

- Choose Black ink if your document doesn't include color.
- Set the Quality/Speed slider to Speed.
- In the printer software's Advanced dialog box, turn MicroWeave off and turn High Speed on.
- If you're using the parallel port, enable ECP/DMA mode on your computer's parallel port for maximum print speeds. See your computer documentation or the manufacturer for instructions.

Your printer makes noise when you turn it on or after it has been sitting for a while . . .

Your printer is performing routine maintenance.

Problems Getting Good Print Quality



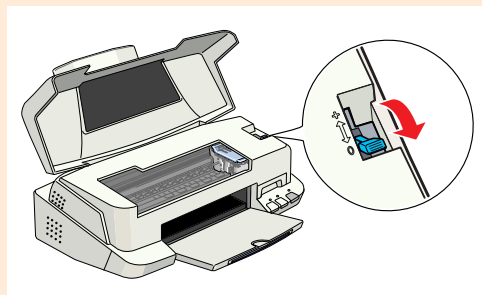
You see horizontal banding . . .

- Make sure the print head nozzles are not clogged. To clean the print head, see page 37.
- Make sure the Media Type setting matches the paper you loaded. See page 35 for guidelines.
- Make sure the printable side of the paper is face up. It is usually whiter or shinier.
- Make sure the ink cartridges aren't low on ink. If either ink out light is flashing, replace the ink cartridge; see page 41. If your ink cartridge is more than six months old, see page 44 for replacement steps.
- Try using Automatic mode. See page 16 (Windows) or page 21 (Macintosh) for instructions.
- Make sure the paper thickness lever is in the **0** position, as shown to the right. Set the lever to the **+** position when you print on thicker paper or envelopes. You may also need to turn off High Speed printing in the printer software.



You see vertical banding . . .

- Make sure the print head nozzles are not clogged. To clean the print head, see page 37.
- Run the Print Head Alignment utility. See page 46 for instructions.
- Check the paper thickness lever position. If it's in the **+** position, your printer is set for thicker paper or envelopes and your image may have banding. For most papers, set the paper thickness lever to the **0** position.





Your printout is blurry or smeared . . .

- Make sure your paper isn't damp or loaded face down (the printable side should be loaded face up). If it's damp, reload a new stack of paper.
- Use a support sheet with special media or try loading your media one sheet at a time.
- Make sure your paper or media meets the specifications listed in your electronic *Reference Guide*.
- Run the Print Head Alignment utility. See page 46 for instructions.
- Check the paper thickness lever position. If it's in the **+** position, your printer is set for thicker paper or envelopes and your image may smear. For most papers, set the paper thickness lever to the **0** position, as shown on page 55.



Your printout is faint or has gaps in the image . . .

- Make sure the print head nozzles are not clogged. To clean the print head, see page 37.
- Make sure the ink cartridges aren't low on ink. To replace an ink cartridge, see page 41.
- Make sure the Media Type setting matches the paper you loaded. See page 35 for guidelines.
- Make sure your paper isn't damaged, old, dirty, or loaded face down. If it is, reload a new stack of paper with the printable side up; it is usually whiter or shinier than the other side.



You see wrong or missing colors . . .

- Make sure the Ink setting is set to Color for color images and your application is set for color printing.
- Make sure the print head nozzles are not clogged. To clean the print head, see page 37.
- Make sure the ink cartridges aren't low on ink. If either ink out light is flashing, replace the ink cartridge; see page 41. If your ink cartridge is more than six months old, see page 44 for replacement steps.
- If you're printing a high-resolution image, turn off PhotoEnhance.
- Try using Automatic mode. See page 16 (Windows) or page 21 (Macintosh) for instructions.
- Make sure your printer and port are selected in your software.
- Your printed colors can never exactly match your on-screen colors. However, you can use a color management system to get as close as possible. For information, see your electronic *Reference Guide*.

You see incorrect characters . . .

- Make sure the interface cable is securely connected and that the cable meets the system requirements on page 4 or page 5. Then try printing again.
- Make sure your printer is selected in your application, or as the Windows default printer or the current printer in the Macintosh Chooser.
- Make sure there aren't any stalled print jobs. If there are, delete them and then try printing again. See your electronic *Reference Guide* for instructions.
- If you're using a switch box with your printer; connect the printer directly to your computer and try printing again.

Your printout is grainy . . .


- Try using a higher quality paper.
- Set the Quality/Speed slider to the Quality setting in your printer software; see page 16 (Windows) or page 21 (Macintosh).
- Run the Print Head Alignment utility. See page 46 for instructions.
- You may need to increase the image resolution or print it in a smaller size; see your software documentation.

Problems with Paper Feeding

Too many copies are printing . . .


Make sure the Copies settings in the printer software and your application aren't both set for multiple copies.

Paper doesn't eject fully or is wrinkled . . .

- If the paper doesn't eject fully, you may have set the wrong paper size. Press the  load/eject button to eject the paper. Then select the correct paper size in your application or printer software.
- If it's wrinkled when it ejects, the paper may be damp or too thin.

Paper doesn't feed . . .

Remove the stack of paper from the sheet feeder. Check that the paper:

- Isn't curled or creased
- Isn't too old
- Isn't loaded above the arrow on the left edge guide
- Isn't jammed inside the printer. (If the  paper out light is flashing, paper is jammed.)

When you reload the paper, make sure the left edge guide fits the paper.

Paper jams inside the printer . . .

Turn off your printer, open the cover, and remove all the paper that's inside, including any small pieces that may have torn off.

If your paper jams frequently:

- Use smooth, high-quality paper, loaded printable side up.
- Fan the stack and then even the edges before loading it.
- Don't load paper above the arrow mark on the left edge guide.
- Place the paper against the right edge guide and slide the left edge guide against your paper.

Multiple pages feed at once . . .

Remove the stack of paper from the printer. Then:

- Make sure the paper isn't too thin.
- Fan the edges of the stack of paper to separate the sheets.
- Reload the paper as described on page 14.
- Make sure the edge guides are snug against the paper.

Solving Miscellaneous Printout Problems

The margins are incorrect . . .

- Make sure the paper settings in your printer software are correct for your paper size. See the electronic *Reference Guide* for instructions.
- Check your software documentation for instructions on selecting the correct margins for your paper size. The margins must be within the printable area of the page. See “Specifications” in your electronic *Reference Guide* for more information.

The image size or position is incorrect . . .

Make sure the paper and/or layout options are set correctly.

The image is inverted, as if viewed in a mirror . . .


Turn off Flip Horizontal in the printer software or the mirror setting in your application software. (If you’re printing on EPSON Iron-On Cool Peel Transfer Paper, the image *should* be inverted so it looks correct when it’s ironed on.)

The printer prints blank pages . . .

- Make sure your printer is selected in your application, or as the Windows default printer or the current printer in the Macintosh Chooser.
- Make sure the paper settings in the printer software are correct for your paper size. See your electronic *Reference Guide* for instructions.
- Make sure the print head nozzles are not clogged. To clean the print head, see page 37.

Uninstalling Printer Software

Windows

1. Double-click  My Computer, then double-click the Control Panel icon.
2. Double-click Add/Remove Programs. Click EPSON Printer Software in the program list, then select your EPSON Stylus COLOR printer icon.
3. Click the Add/Remove button and follow the instructions.
4. If you're using the USB port, click EPSON USB Printer Devices in the program list; then click the Add/Remove button. Restart your computer.

Macintosh

1. Insert your printer software CD-ROM. Then double-click the EPSON CD-ROM icon and double-click the EPSON icon. You see the Main Menu.
2. Click Install Printer Driver. On the installer screen, click the arrow in the Easy Install list at the top and select Uninstall. Then click the Uninstall button at the bottom and follow the instructions. Restart your Macintosh.

Reinstalling Printer Software

Before reinstalling your printer software, first uninstall it as described above.

Windows

1. **USB connection:** Follow the plug-and-play software installation instructions on your *Start Here* poster.

Parallel connection: Insert your printer software CD-ROM. Double-click  My Computer, double-click your  CD-ROM drive icon, then double-click the  EPSON icon. The Main Menu appears.

2. Click Install Printer Driver and follow the instructions. Restart your computer.

Macintosh

1. Insert your printer software CD-ROM. Then double-click the EPSON CD-ROM icon and double-click the EPSON icon. You see the Main Menu.
2. Click Install Printer Driver and follow the instructions on screen. Restart your Macintosh.

Where To Get Help

If you need help with your printer or its software, see the contact information below. For help with the creative applications on the printer software CD-ROM, see page 62 for contact information. If you need help using other software with an EPSON product, see the documentation for that software for technical support information.

EPSON Technical Support

EPSON provides technical assistance through electronic support services and automated telephone services 24 hours a day, as listed in the following tables:

Electronic support services

Service	Access
World Wide Web	From the Internet, you can reach EPSON's Home Page at http://www.epson.com .
EPSON Internet FTP Site	If you have Internet FTP capability, use your Web browser (or other software for FTP downloading) to log onto ftp.epson.com with the user name anonymous and your e-mail address as the password.

Automated telephone services

Service	Access
EPSON SoundAdvice SM	For pre-recorded answers to commonly asked questions about EPSON products 24 hours a day, seven days a week, call (800) 922-8911 .
EPSON FaxAdvice TM	Access EPSON's technical information library by calling (800) 922-8911 . You must provide a return fax number to use this service.
EPSON Referral Service	For the location of your nearest Authorized EPSON Reseller or Customer Care Center, call (800) 922-8911 .

To speak to a technical support representative, dial:

- U.S.: **EPSON Stylus COLOR 760; (562) 276-7542**
EPSON Stylus COLOR 860; (562) 276-7586
6 AM to 8 PM, Pacific Time, Monday through Friday and 7 AM to 4 PM, Saturday
- Canada: **(905) 709-2567**, 6 AM to 8 PM, Pacific Time, Monday through Friday and 7 AM to 4 PM, Saturday

Toll or long distance charges may apply.

Before you call, please have the following information ready:

- Product name (EPSON Stylus COLOR 760 or 860)
- Product serial number (located on the back of the printer)
- Computer configuration
- Description of the problem

You can purchase ink cartridges, paper, manuals, and accessories from EPSON Accessories at (800) 873-7766 or visit our web site at www.epsonsupplies.com (U.S. sales only). In Canada, please call (800) 873-7766 for dealer referral.

Creative Software Technical Support

If you need help with the creative software on the printer software CD-ROM, please contact the manufacturer, as listed below:

Contact method	Polaroid PhotoMAX Pro and ArcSoft PhotoPrinter
Phone	(510) 440-9901, 8:30 AM to 5:30 PM Pacific Standard Time
Fax	(510) 440-1270
Online	e-mail: support@arcsoft.com ; web site: http://www.arcsoft.com
Mail	ArcSoft Technical Support 46601 Fremont Blvd. Fremont, CA 94538

Index

Numerics

360 dpi Ink Jet Paper, 35
4 x 6-inch Photo Paper, 31 to 32

A

Accessories, 41, 62
Advanced settings, 28 to 30
Aligning print head, 46
Automatic mode, 16 to 17, 21

B

Background printing, 22
Banding, 34, 55
Blurry images, 56
Browser, 9

C

Cable, printer, 4, 5
Checking printer, 51
Cleaning
 print head, 37 to 40
 printer, 47
 sheets, 35, 37, 47
Color management settings, 29 to 30
Colors, incorrect, 57
Control panel, 39, 49 to 50
Controlling printing, 18, 22
Copies setting, 58
Creative software, 2, 62
Custom project types, 26 to 28

D

Default settings, Windows, 17
Digital Camera Correction setting, 24
Documentation, 3

E

Economy setting, 27
Electronic manual, 2, 9 to 11
ENERGY STAR, 6
Envelopes, 34
EPSON
 Accessories, 41, 62
 help, 61 to 62
 Monitor3, 22
 papers, 31 to 35

F

Faint images, 56
Flip Horizontal setting, 59

G

Glossy media, 35
Graph setting, 27
Guided Printing Exercise, 13 to 14

H

Head Cleaning utility, 37 to 39
Help
 creative software, 62
 EPSON, 61 to 62
High Quality Ink Jet Paper, 35
High Speed setting, 54
High-resolution images, 23, 57

I

ICM (Image Color Matching) setting, 27
Incorrect characters, 57
Incorrect colors, 57
Ink cartridge
 replacing, 41 to 43
 replacing outdated, 41, 44 to 45
 safety instructions, 7 to 8
Ink Jet Transparencies, 35
Ink level, 18, 41
Ink setting, 16, 21, 24, 26, 29
Iron-On Cool Peel Transfer Paper, 35, 59

L

Layout
 problems, 59
 settings, 25, 28, 30
Lever, thickness, 34, 55, 56
Lights, 49 to 50
Low-resolution images, 23

M

Macintosh
 printer status, 22
 printing with, 19 to 22
 system requirements, 5
 USB, 5
Maintaining printer, 37 to 47
Matte Paper - Heavyweight, 31, 35
Media Pack, EPSON, 31
Media Type setting, 16, 21, 24, 26, 29, 35
MicroWeave setting, 54
Mirror images, 59
Monitor3, EPSON, 22
Monitoring ink level, 18, 41
Moving printer, 48

N

Network printing, 53
Nozzle check pattern, 38 to 40, 51

O

Orientation, 20, 23, 26, 28
Outdated ink cartridges, 41, 44 to 45

P

Page Setup dialog box, 20, 23, 26, 28
Panoramic Photo Paper, 33
Paper
 EPSON, 31 to 35
 feeding problems, 58
 loading, 14 to 15, 19, 31 to 34
 size, 18, 20, 22 to 23, 25 to 28, 30
 thickness lever, 34, 55, 56
 type, setting, *see* Media Type setting
Photo Paper, 31 to 33, 35
Photo Quality Glossy media, 35
Photo Quality Ink Jet Paper, 31, 35
Photo Quality Media Pack, 31
Photo Stickers, 35
PhotoEnhance, 23 to 25
Preserving photos, 33
Previewing, 18, 22
Print dialog box, 15 to 16, 18
Print head
 aligning, 46
 cleaning, 37 to 40
Print Head Alignment utility, 46
Print quality
 problems, 55 to 57
 setting, 29
Printable Area setting, 20, 23, 26, 28, 32

Printer

- cable, 4, 5
- check, 51
- cleaning, 47
- control panel, 39, 49 to 50
- features, 1
- maintaining, 37 to 47
- noise, 54
- parts, 52
- problems, 49 to 51, 54
- status, 18, 22
- transporting, 48

Printing

- advanced, 28 to 30
- controlling, 18, 22
- Macintosh, 19 to 22
- Windows, 14 to 18
- with custom project types, 26 to 28
- with PhotoEnhance, 23 to 25

Problems

- installing software, 53
- miscellaneous, 59
- paper feeding, 58
- print quality, 55 to 57
- printing, 54
- setting up printer, 53

Progress Meter, 18

Project types, custom, 26 to 28

Q

Quality/Speed setting, 17, 21

R

Reference Guide, 2, 9 to 11

Reinstalling software, 60

S

Safety instructions, 6 to 8

Saving settings, 28, 30

Service, 61 to 62

Smears, 34, 56

Software

- creative, 2, 62
- problems, solving, 53
- reinstalling, 60
- uninstalling, 60

Special effects, 28

Special papers, 31 to 35

sRGB (Standard Red Green Blue) setting, 27

Support, 61 to 62

System requirements, 4, 5

T

Text/Graph setting, 27

Thickness lever, 34, 55, 56

Transfer Paper, Iron-On Cool Peel, 35, 59

Transparencies, 35

Transporting printer, 48

Troubleshooting, 49 to 62

U

Uninstalling software, 60

USB, 4, 5, 60

Utilities

Head Cleaning, 37 to 39

Print Head Alignment, 46

W

Watermark, 18, 22, 25, 28, 30

Windows

default settings, 17

printer status, 18

printing with, 14 to 18

system requirements, 4

USB, 4, 60

World Wide Web, 61, 62

Y

Year 2000, 6

FCC Compliance Statement

For United States Users

This equipment has been tested and found to comply with the limits for a Class B digital device, pursuant to Part 15 of the FCC Rules. These limits are designed to provide reasonable protection against harmful interference in a residential installation. This equipment generates, uses, and can radiate radio frequency energy and, if not installed and used in accordance with the instructions, may cause harmful interference to radio or television reception. However, there is no guarantee that interference will not occur in a particular installation. If this equipment does cause interference to radio and television reception, which can be determined by turning the equipment off and on, the user is encouraged to try to correct the interference by one or more of the following measures:

- Reorient or relocate the receiving antenna.
- Increase the separation between the equipment and receiver.
- Connect the equipment into an outlet on a circuit different from that to which the receiver is connected.
- Consult the dealer or an experienced radio/TV technician for help.

WARNING

The connection of a non-shielded equipment interface cable to this equipment will invalidate the FCC Certification of this device and may cause interference levels which exceed the limits established by the FCC for this equipment. It is the responsibility of the user to obtain and use a shielded equipment interface cable with this device. If this equipment has more than one interface connector, do not leave cables connected to unused interfaces. Changes or modifications not expressly approved by the manufacturer could void the user's authority to operate the equipment.

For Canadian Users

This Class B digital apparatus meets all requirements of the Canadian Interference-Causing Equipment Regulations.

Cet appareil numérique de la classe B respecte toutes les exigences du Règlement sur le matériel brouilleur du Canada.

DECLARATION of CONFORMITY

According to 47CFR, Part 2 and 15 for Class B Personal Computers and Peripherals; and/or CPU Boards and Power Supplies used with Class B Personal Computers:

We: EPSON AMERICA, INC.

Located at: 20770 Madrona Avenue
MS: B2-11
Torrance, CA 90503
Telephone: (310) 782-5254

Declare under sole responsibility that the product identified herein, complies with 47CFR Part 2 and 15 of the FCC rules as a Class B digital device. Each product marketed, is identical to the representative unit tested and found to be compliant with the standards. Records maintained continue to reflect the equipment being produced can be expected to be within the variation accepted, due to quantity production and testing on a statistical basis as required by 47CFR §2.909 Operation is subject to the following two conditions: (1) this device may not cause harmful interference, and (2) this device must accept any interference received, including interference that may cause undesired operation.

Trade Name: EPSON

Type of Product: Ink Jet Printer

Model: P150B (EPSON Stylus COLOR 760)
P150A (EPSON Stylus COLOR 860)

EPSON Ink Jet Papers

Use EPSON's paper and inks to get the same photo quality results that have earned your printer all of its awards! EPSON's papers are specially coated to work with EPSON's quick drying inks. You'll notice that when prints come out of your printer, you can immediately handle them. There is no drying time, no smearing or smudging, and your image is clean and smooth. Here are just a few of EPSON's papers:

Photo Quality Ink Jet Paper

Bright white, with a smooth matte finish to create your best impression. Perfect for presentations, newsletters, color reproductions, and all your photo and craft projects.



Photo Quality Glossy Film

Durable, bright white film sheets with the highest-gloss finish. Perfect for printing professional quality, high-resolution photographs of all your digital images.



Photo Paper and Panoramic Photo Paper

Photo lab quality, heavier weight glossy paper available in a variety of sizes. Perfect for color photo keepsakes of snapshots, framed art, banners, and panoramics.



Iron-On Cool Peel Transfer Paper

Transfer your designs and photographs onto T-shirts or other cloth items. Perfect for ironing onto team T-shirts, canvas bags, crafts, and gifts.



See the inside back cover for a list of EPSON papers and ordering information.

Only the EPSON Stylus COLOR 860 printer is shown on the cover.

How to Order EPSON Ink and Paper

To order EPSON ink cartridges, paper, and other printing media, contact your dealer or call EPSON Accessories at (800) 873-7766 or visit our web site at www.epsonsupplies.com (U.S. sales only). In Canada, please call (800) 873-7766 for dealer referral.

Ink Cartridges

Black S020189
Color S020191

EPSON Papers

Paper name	Size	Part number
EPSON 360 dpi Ink Jet Paper	Letter	S041060
	A4 (8.3 x 11.7 inches)	S041059
EPSON High Quality Ink Jet Paper	Letter	S041111
	A4 (8.3 x 11.7 inches)	S041117
EPSON Photo Quality Ink Jet Paper	Letter	S041062
	A4 (8.3 x 11.7 inches)	S041061
	Legal	S041067
EPSON Photo Quality Ink Jet Cards	A6 (4.1 x 5.8 inches)	S041054
	8 x 10 inches	S041122
EPSON Photo Paper	4 x 6 inches	S041134
	Letter	S041141
	A4 (8.3 x 11.7 inches)	S041140
	Panoramic (8.3 x 23 inches)	S041145
EPSON Photo Stickers Kit (CD-ROM/paper)	A6 (4.1 x 5.8 inches)	S041144-KIT
EPSON Photo Stickers (refill)	A6 (4.1 x 5.8 inches)	S041144
EPSON Photo Quality Glossy Film	Letter	S041072
	A4 (8.3 x 11.7 inches)	S041071
	A6 (4.1 x 5.8 inches)	S041107
EPSON Ink Jet Transparencies	Letter	S041064
EPSON Photo Quality Self Adhesive Sheets	A4 (8.3 x 11.7 inches)	S041106
EPSON Iron-On Cool Peel Transfer Paper	Letter	S041153/S041155
EPSON Photo Quality Glossy Paper	Letter	S041124
	A4 (8.3 x 11.7 inches)	S041126
Matte Paper - Heavyweight	Letter	S041257